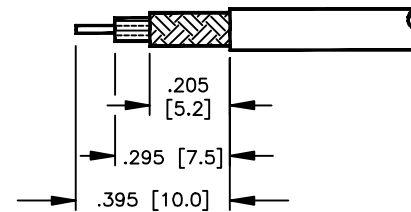
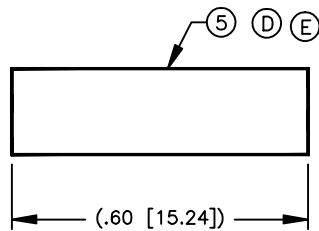
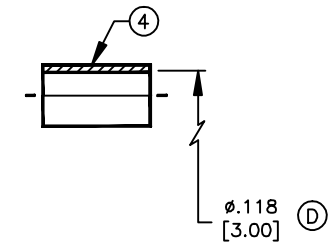
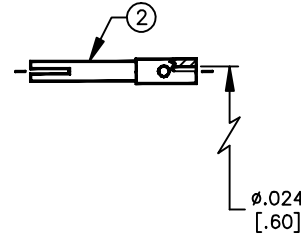
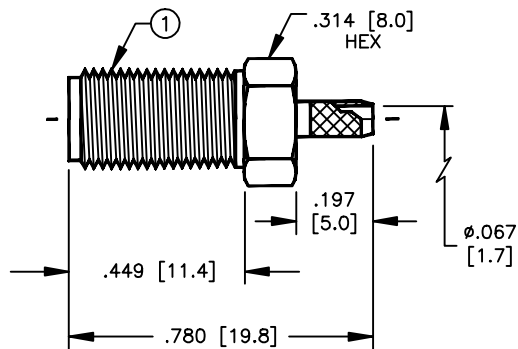


SPECIFICATION CONTROL DRAWING

THIS DRAWING CONTAINS INFORMATION PROPRIETARY TO RF INDUSTRIES, LTD. ANY UNAUTHORIZED USE OF THIS DRAWING IS EXPRESSLY PROHIBITED. ANY VIOLATION IS PUNISHABLE UNDER U.S. COPYRIGHT LAWS.

REV	DESCRIPTION	DWN	DATE	APPROVED
B	ADD ELECTRICAL SPECS	KMM	9/1/96	R. RICE
C	REMOVE FLATS FROM BODY ITEM #1	CZS	5/28/98	R. RICE
D	CHANGE FERRULE ID ITEM #4 / ADD HEAT SHRINK ITEM #5	CZS	7/29/98	R. RICE
E	CHANGED SHRINK TUBE LENGTH (ITEM #5)	JDM	7/18/11	R. RICE

ALL DIMENSIONS ARE REFERENCE ONLY



SUGGESTED STRIPPING INSTRUCTIONS
SUGGESTED CRIMP: .130
CONTACT TO BE SOLDERED

SPECIFICATIONS:

IMPEDANCE: 50 OHMS
 WORKING VOLTAGE: 375 PEAK @ SEA LEVEL
 FREQUENCY RANGE: 0-12.4 GHz
 INSERTION LOSS: ≤ -.2 dB @ 6 GHz
 FOR RG-174, 188, 188A, 316/U, ALPHA 9174, 9316,
 BELDEN 8216, 83269, 83284, 84316 & TIMES LMR-100 CABLE
 INTERFACE PER MIL-STD-348A, SECTION 310.2

DIMENSIONS ARE IN INCHES AND [MILLIMETERS]

UNLESS OTHERWISE NOTED TOLERANCES ARE:

DECIMALS DIAMETER

*RF*connectors

DIVISION OF RF INDUSTRIES, LTD.

7610 MIRAMAR RD
 SAN DIEGO, CA 92126
 (619)549-6340
 (619)549-6345 FAX

RSA-3050-B

SMA FEMALE CRIMP

ITEM	DESCRIPTION	QTY	MATERIAL	FINISH
5	TUBING	1	HEAT SHRINK	BLACK
4	FERRULE	1	COPPER	NICKEL
3	DIELECTRIC	1	TEFLON	NONE
2	CONTACT	1	BeCu	GOLD
1	BODY	1	BRASS	NICKEL

DRAWN C. ZUNIGA	7/29/98
CHECKED	
ORJ DRAWN K. MAXWELL	4/21/94
APPROVALS	DATE

SIZE A	CABLE GROUP B	DWG NO. RSA-4050-B	REV E
SCALE: 2:1		CAD FILE 13ARC B	SHEET 1 OF 1