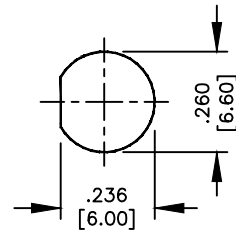
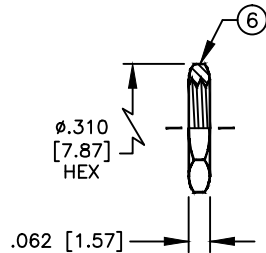
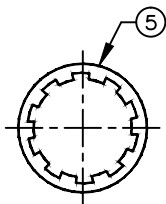
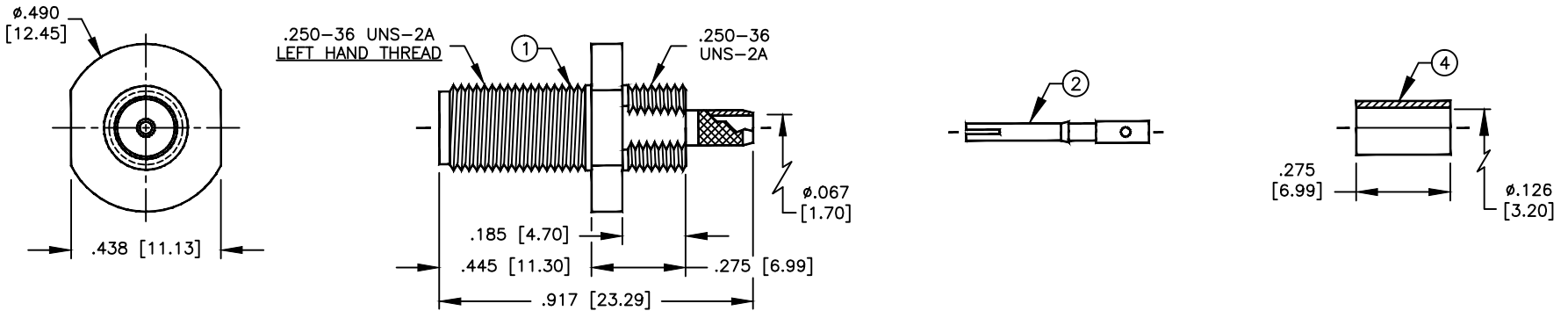


SPECIFICATION CONTROL DRAWING

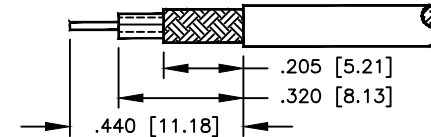
THIS DRAWING CONTAINS INFORMATION PROPRIETARY TO RF INDUSTRIES, LTD. ANY UNAUTHORIZED USE OF THIS DRAWING IS EXPRESSLY PROHIBITED. ANY VIOLATION IS PUNISHABLE UNDER U.S. COPYRIGHT LAWS.

REV	DESCRIPTION	DWN	DATE	APPROVED
A	ENGINEERING RELEASE	KMM	6/1/98	R. RICE
B	CHG P/N / CHG HEX NUT & BODY FLANGE / ADD LOCKWASHER	KMM	8/10/99	R. RICE

ALL DIMENSIONS ARE REFERENCE ONLY



SUGGESTED MOUNTING CONFIGURATION



SUGGESTED STRIPPING INSTRUCTIONS

RECOMMENDED CRIMP DIE: .130
PIN TO BE SOLDERED

SPECIFICATIONS:

IMPEDANCE: 50 OHMS
 WORKING VOLTAGE: 375V PEAK @ SEA LEVEL
 FREQUENCY RANGE: 0-12.4 GHz
 INSERTION LOSS: ≤ -.2 dB @ 6 GHz
 VSWR MAX: 1.3:1 @ 12 GHz
 FOR RG-174, 188, 188A, 316/U, ALPHA 9174, 9316,
 BELDEN 8216, 83269, 83284, 84316 & TIMES LMR-100A CABLE

DIMENSIONS ARE IN INCHES AND [MILLIMETERS]

UNLESS OTHERWISE NOTED TOLERANCES ARE:

DECIMALS DIAMETER

RFconnectors

DIVISION OF RF INDUSTRIES, LTD.

7610 MIRAMAR RD
 SAN DIEGO, CA 92126
 (858) 549-6340
 (858) 549-6345 FAX

RT-3252-1B-04

SMA FEMALE CRIMP BULKHEAD,
FRONT MOUNT, LEFT HAND THREADS

ITEM	DESCRIPTION	QTY	MATERIAL	FINISH
6	HEX NUT	1	BRASS	GOLD
5	LOCKWASHER	1	BRASS	GOLD
4	FERRULE	1	BRASS	GOLD
3	DIELECTRIC	1	PTFE	NONE
2	CONTACT	1	BeCu	GOLD
1	BODY	1	BRASS	GOLD

DRAWN K. MAXWELL	8/10/99
CHECKED	
ORJ DRAWN K. MAXWELL	6/1/98
APPROVALS	DATE

SIZE	CABLE GROUP	DWG NO.	REV
A	B	8924	B
SCALE: 2:1		CAD FILE 13ARC B	SHEET 1 OF 1