

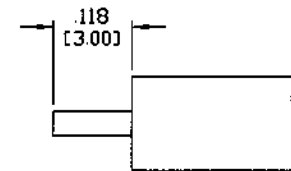
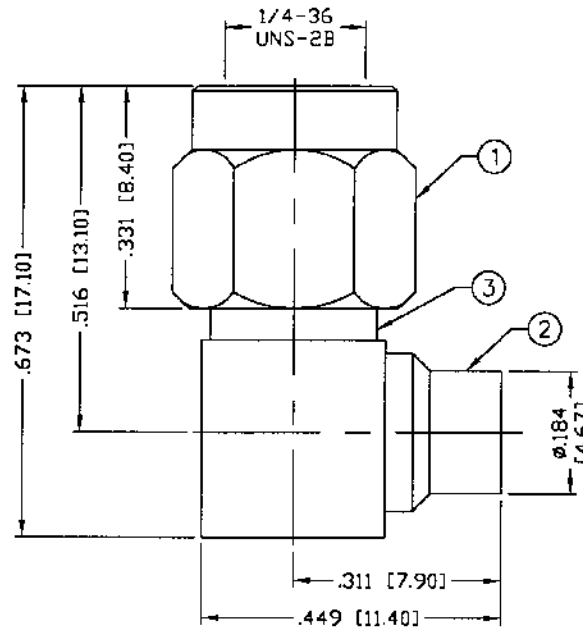
THIS DRAWING CONTAINS INFORMATION PROPRIETARY TO RF INDUSTRIES.
 ANY UNAUTHORIZED USE OF THIS DRAWING IS EXPRESSLY PROHIBITED
 WITHOUT WRITTEN PERMISSION FROM RF INDUSTRIES.
 ANY VIOLATION IS PUNISHABLE UNDER U.S. COPYRIGHT LAWS.

ALL DIMENSIONS ARE REFERENCE ONLY

PART NO.

RSA-3510-1-141

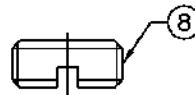
REV	DESCRIPTION	DWN	DATE	APPROVED
-	ENGINEERING RELEASE	CZS	5/24/00	JDMc



RECOMMENDED STRIPPING DIMENSION

SPECIFICATIONS:

IMPEOANCE: 50 Ohms
 FREQUENCY RANGE: 0-18 GHz
 INSERTION LOSS(dB): $0.04 \times \sqrt{f(\text{GHz})}$
 VSWR: $1.15 + .03 \times \sqrt{f(\text{GHz})}$
 WORKING VOLTAGE: 500 V rms Max. @ Sea Level
 INSULATION RESISTANCE: 5k M Ohms min.
 TEMPERATURE RANGE: -65°C TO 165°C
 FOR .141 SEMI RIGID, RG-402/U & BELDEN 1673A CABLE



1	SHELL	1	BRASS	GOLD, 3μ "
2	PRESS BODY	1	BRASS	GOLD, 3μ "
3	BODY	1	BRASS	GOLD, 3μ "
4	INSULATOR	1	PTFE	---
5	PIN	1	BRASS	GOLD, 50μ "
6	RETAINING RING	1	BeCu	---
7	GASKET	1	SILICONE	---
8	SCREW CAP	1	BRASS	GOLD, 3μ "
9				
10				
11				
12				
13				
14				
#	DESCRIPTION	QTY	MATERIAL	FINISH

00B974		
DRAWN	C. ZUNIGA	6/11/03
CHECKED	<i>[Signature]</i>	6.12.03
OR DRAWN	C. ZUNIGA	6/11/03
APPROVALS	DATE	

UNLESS OTHERWISE SPECIFIED:
 1. REMOVE ALL BURRS
 2. BREAK ALL CORNERS & EDGES .005 R. MAX.
 3. CHAMFER 1ST & LAST THREADS 45°
 4. SURFACE ROUGHNESS 6.3 FINISH MIL-STD-10
 5. DIAMETERS ON COMMON CENTERS TO BE CONCENTRIC WITHIN .002 T.I.R.
 6. ALL DIMENSIONS ARE AFTER PLATING.

DIMENSIONS ARE IN INCHES AND [MILLIMETERS]
 UNLESS OTHERWISE NOTED
 TOLERANCES ARE:

DECIMALS	DIAMETER
.XXX±.003 [.08]	.XXX±.001 [.03]
.XX±.005 [.13]	.XX±.003 [.08]

RF connectors
 DIVISION OF RF INDUSTRIES, LTD.

7610 MIRAMAR RD
 SAN DIEGO, CA 92126
 (858) 549-6340
 (858) 549-6345 FAX

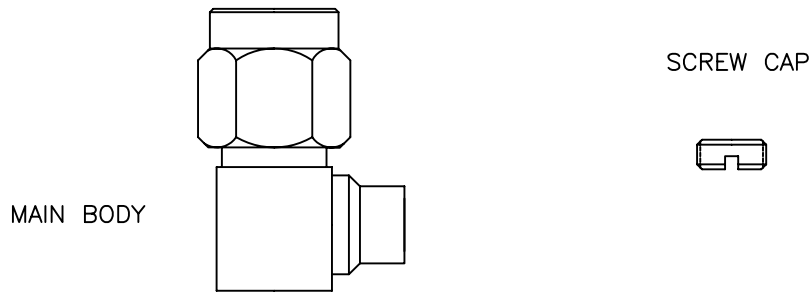
SMA PLUG

RIGHT ANGLE, DIRECT SOLDER

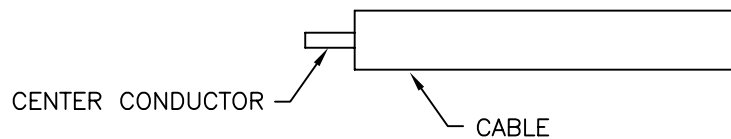
SIZE	CABLE GROUP	DWG NO.	REV
A	SR2	RSA-3510-1-141	-
SCALE:	NTS	CAD FILE	OUTLINE
SHEET 1 OF 1			

CABLE ASSEMBLY INSTRUCTIONS

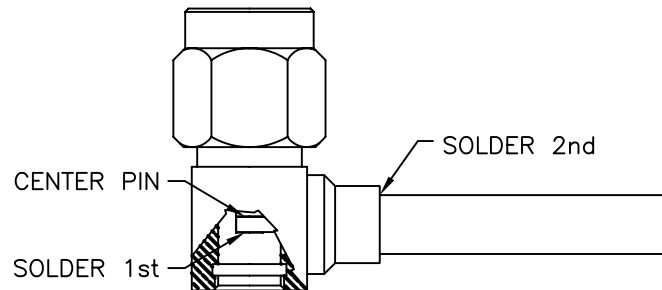
RSA-3510-1-141



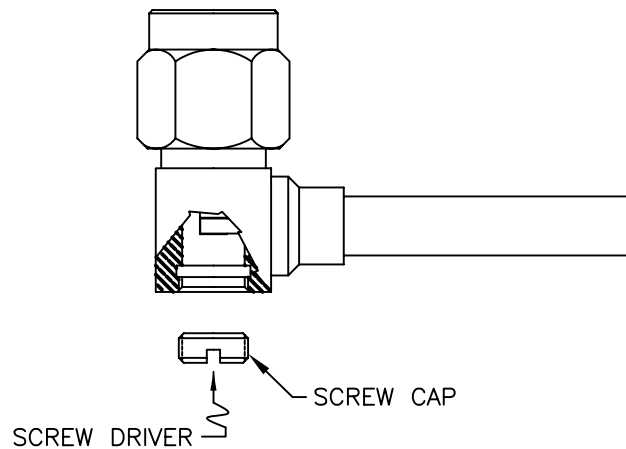
STEP 1



STEP 2



STEP 3



Step 1: Cut end of cable evenly. Strip cable to dimensions shown on the outline drawing. All cuts are to be sharp and square. Do not nick center conductor while cutting the dielectric. Remove any burrs.

Step 2: Insert cable into the connector body until the end of the cable center conductor is square to the end of the center conductor (pin) inside the connector. Cable center conductor should not extend past outer diameter of connector pin. Solder inner conductor to the connector's pin then solder the main body to the outer conductor of the cable.

Step 3: Tighten "screw cap" with flat head screw driver.

RSA-3510-1-141 AP.dwg

RF CONNECTORS

1/20/10

7610 Miramar Road, San Diego, CA 92126-4202 - (858) 549-6340
(800) 233-1728 - Fax (858) 549-6345 E-mail: rfi@rfindustries.com - www.rfindustries.com

jdm