

ENVELOPE / ASSEMBLY DRAWING

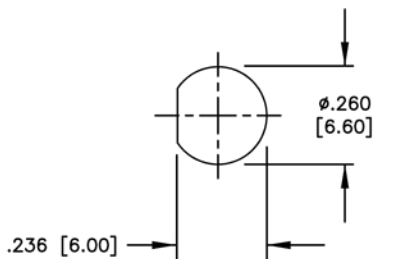
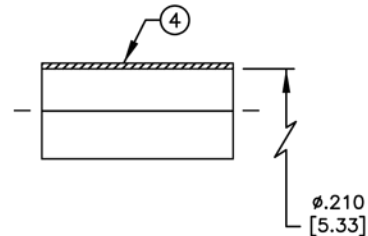
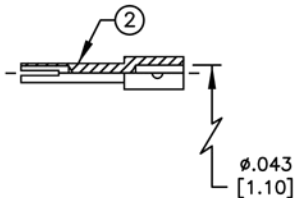
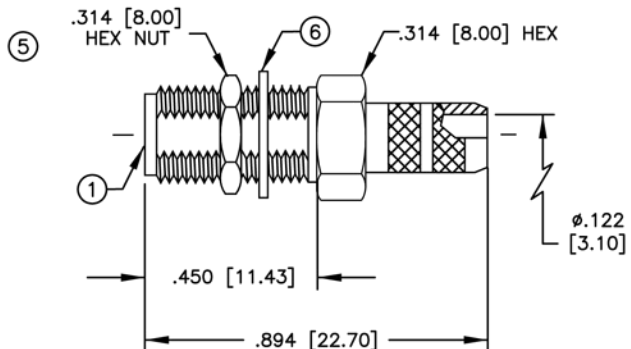
008974

SPECIFICATION CONTROL DRAWING

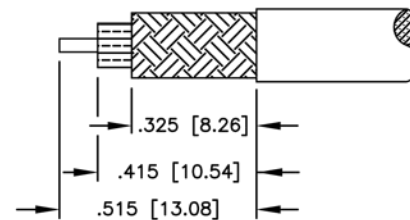
THIS DRAWING CONTAINS INFORMATION PROPRIETARY TO RF INDUSTRIES, LTD. ANY UNAUTHORIZED USE OF THIS DRAWING IS EXPRESSLY PROHIBITED. ANY VIOLATION IS PUNISHABLE UNDER U.S. COPYRIGHT LAWS.

REV	DESCRIPTION	DWN	DATE	APPROVED
A	ENGINEERING RELEASE	WMD	2/4/94	C. JONES
B	ADD ELECTRICAL SPECS	KMM	9/1/96	R. RICE

ALL DIMENSIONS ARE REFERENCE ONLY



SUGGESTED MOUNTING CONFIGURATION
.126 [3.20] MAX PANEL THICKNESS



SUGGESTED STRIPPING INSTRUCTIONS
RECOMMENDED CRIMP DIE: .213
PIN TO BE SOLDERED

SPECIFICATIONS:

IMPEDANCE: 50 OHMS
WORKING VOLTAGE: 500V PEAK @ SEA LEVEL
FREQUENCY RANGE: 0-12.4 GHz
INSERTION LOSS: \leq -.2dB @ 6 GHz
VSWR MAX: 1.3:1 @12 GHz
FOR RG-58, 58A, 58C, 141, 141A, 400/U, BELDEN 8240, 8259, 8262, 9201, 9203, 9310, 9311, COMM/SCOPE 0268 & CUSHCRAFT ULTRALINK TL92463E INTERFACE PER MIL-STD-348A, SECTION 310.2

DIMENSIONS ARE IN INCHES AND [MILLIMETERS]

UNLESS OTHERWISE NOTED TOLERANCES ARE:
DECIMALS DIAMETER

RF connectors
DIVISION OF RF INDUSTRIES, LTD.

7610 MIRAMAR RD
SAN DIEGO, CA 92126
(619)549-6340
(619)549-6345 FAX

RSA-3252-C

SMA FEMALE BULKHEAD CRIMP, REAR MNT W / HARDWARE

ITEM	DESCRIPTION	QTY	MATERIAL	FINISH
6	LOCK WASHER [LKW-250]	1	BRASS	NICKEL
5	HEX NUT [HEX-250-36S]	1	BRASS	NICKEL
4	FERRULE	1	*BRASS	*NICKEL
3	DIELECTRIC	1	TEFLON	NONE
2	CONTACT	1	BeCu	GOLD
1	BODY	1	BRASS	NICKEL

DRAWN	K. MAXWELL	9/1/96
CHECKED		
ORJ DRAWN	W. DANIELS	2/4/94
APPROVALS		DATE

SIZE	CABLE GROUP	DWG NO.	REV
A	C	8297	B
SCALE:	2:1	CAD FILE	13ARC B
			SHEET 1 OF 1