

ENVELOPE / ASSEMBLY DRAWING

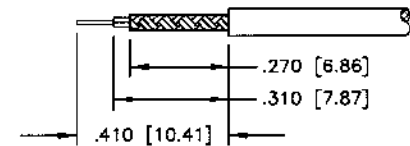
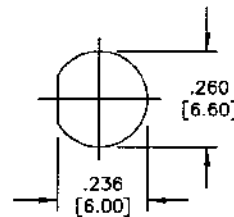
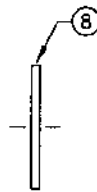
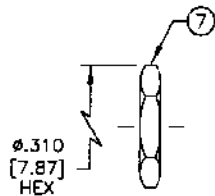
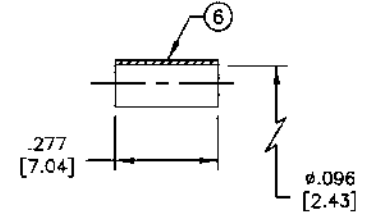
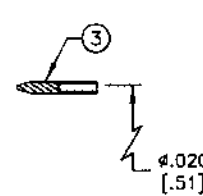
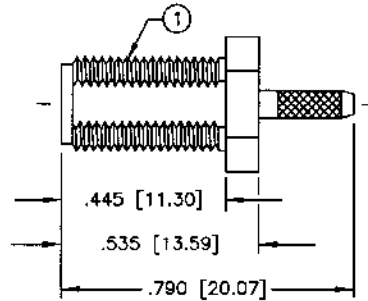
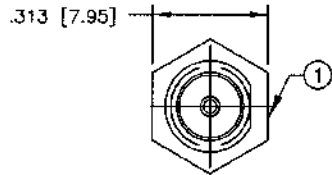
000000

SPECIFICATION CONTROL DRAWING

THIS DRAWING CONTAINS INFORMATION PROPRIETARY TO RF INDUSTRIES, LTD. ANY UNAUTHORIZED USE OF THIS DRAWING IS EXPRESSLY PROHIBITED. ANY VIOLATION IS PUNISHABLE UNDER U.S. COPYRIGHT LAWS.

REV	DESCRIPTION	DWN	DATE	APPROVED
E	DIELECTRIC NOW 2 PIECES [#4] & [#5], CHG MNTG CONFIG	CZS	3/16/98	R. RICE
F	ADD NOTE TO STRIP INSTR / ADD TOLERANCE TO TOL BLOCK	CZS	2/24/99	R. RICE
G	CHANGED FERRULE STUD TO KNURL CONFIGURATION	JDM	11/2/99	R. RICE
H	CHG ITEM #2 & #3 ID DIMENSIONS & SLOTS CALL OUT	CZS	3/22/00	J. D. McR.

ALL DIMENSIONS ARE REFERENCE ONLY



SUGGESTED MOUNTING CONFIGURATION

SUGGESTED STRIPPING INSTRUCTIONS
 COMB BRAID BEFORE SLIDING FERRULE IN PLACE
 RECOMMENDED CRIMP DIE: 100
 PIN TO BE SOLDERED

SPECIFICATIONS:

IMPEDANCE: 50 OHMS
 WORKING VOLTAGE: 375V PEAK @ SEA LEVEL
 FREQUENCY RANGE: 0-12.4 GHz
 INSERTION LOSS: ≤ -.2dB @ 6 GHz
 VSWR MAX: 1.3:1 @ 12 GHz
 FOR RG-178, 178A, 178B, 196 & 196A/U CABLE

DIMENSIONS ARE IN INCHES AND [MILLIMETERS]

UNLESS OTHERWISE NOTED TOLERANCES ARE:
 DECIMALS DIAMETER

DRAWN C. ZUNIGA 3/22/00

CHECKED *BDM* 3-22-00

ORJ DRAWN K. MAXWELL 4/29/96

APPROVALS DATE

RFconnectors
 DIVISION OF RF INDUSTRIES, LTD.

7610 MIRAMAR RD
 SAN DIEGO, CA 92126
 (858) 549-6340
 (858) 549-6345 FAX

RSA-3252-A-4

SMA FEMALE REVERSE GENDER BULKHEAD CRIMP

SIZE A	CABLE GROUP A	DWG NO. 8636	REV H
SCALE: 2:1		CAD FILE	SHEET 1 OF 1

ITEM	DESCRIPTION	QTY	MATERIAL	FINISH
8	LOCK WASHER [LKW-250]	1	BRASS	NICKEL
7	HEX NUT [HEX-250-36S]	1	BRASS	NICKEL
6	FERRULE	1	BRASS	NICKEL
5	DIELECTRIC	1	TEFLON	NONE
4	DIELECTRIC	1	TEFLON	NONE
3	CONTACT	1	BRASS	GOLD
2	CONTACT	1	BRASS	GOLD
1	BODY	1	BRASS	NICKEL