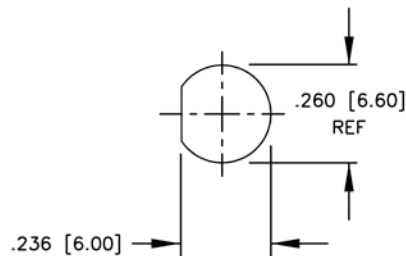
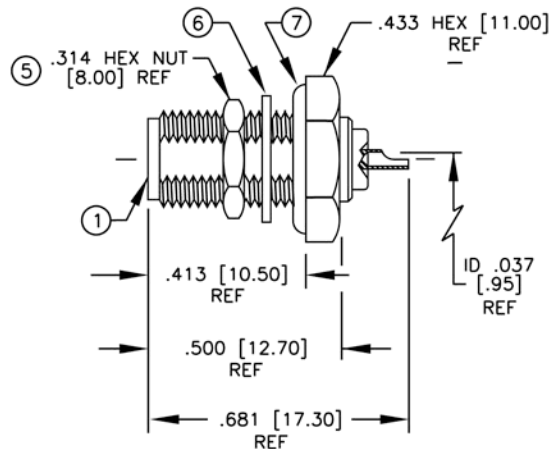


ENVELOPE / ASSEMBLY DRAWING

008974

SPECIFICATION CONTROL DRAWING	REV	DESCRIPTION	DWN	DATE	APPROVED
	A	ENGINEERING RELEASE	KMM	10/25/95	R. RICE
	B	ADD SOLDER POT ID	KMM	8/25/96	R. RICE

THIS DRAWING CONTAINS INFORMATION PROPRIETARY TO RF INDUSTRIES, LTD. ANY UNAUTHORIZED USE OF THIS DRAWING IS EXPRESSLY PROHIBITED. ANY VIOLATION IS PUNISHABLE UNDER U.S. COPYRIGHT LAWS.



RECOMMENDED MOUNTING HOLE
.094 [2.40] MAX PANEL THICKNESS

SPECIFICATIONS:

IMPEDANCE: 50 OHMS
WORKING VOLTAGE: 335 VRMS @ SEA LEVEL
FREQUENCY RANGE: 0-12.4 GHz

DIMENSIONS ARE IN INCHES AND [MILLIMETERS]

UNLESS OTHERWISE NOTED TOLERANCES ARE:

DECIMALS DIAMETER

DRAWN K. MAXWELL 8/25/96

CHECKED

ORJ DRAWN K. MAXWELL 10/25/95

APPROVALS DATE

RFconnectors
DIVISION OF RF INDUSTRIES, LTD.

7610 MIRAMAR RD
SAN DIEGO, CA 92126
(619)549-6340
(619)549-6345 FAX

RSA-3251-1-10

SMA FEMALE BULKHEAD, SOLDER, REAR MNT W/O RING

SIZE A	CABLE GROUP N/A	DWG NO. 8570	REV B
-----------	--------------------	-----------------	----------

SCALE: 2:1 CAD FILE 13ARC B SHEET 1 OF 1

ITEM	DESCRIPTION	QTY	MATERIAL	FINISH
7	O RING	1	S.I. RUBBER	RED
6	LOCK WASHER [LKW-250]	1	BRASS	GOLD
5	HEX NUT [HEX-250-36S]	1	BRASS	GOLD
4	DIELECTRIC	1	TEFLON	NONE
3	DIELECTRIC	1	TEFLON	NONE
2	PIN	1	BeCu	GOLD
1	BODY	1	BRASS	GOLD