

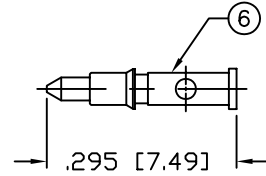
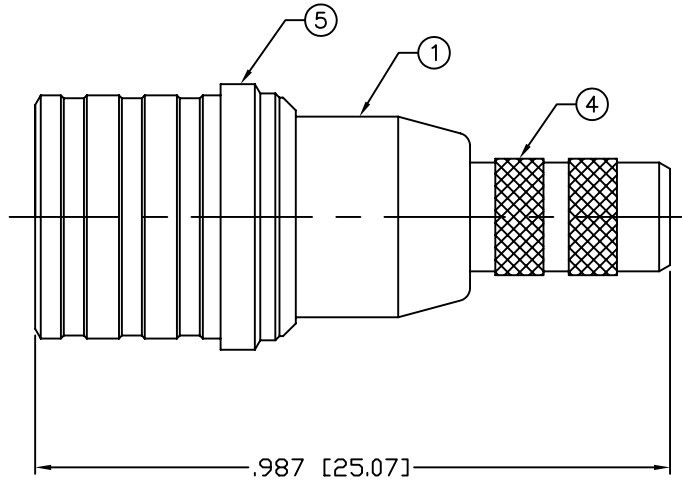
THIS DRAWING CONTAINS INFORMATION PROPRIETARY TO RF INDUSTRIES,
 ANY UNAUTHORIZED USE OF THIS DRAWING IS EXPRESSLY PROHIBITED
 WITHOUT WRITTEN PERMISSION FROM RF INDUSTRIES.
 ANY VIOLATION IS PUNISHABLE UNDER U.S. COPYRIGHT LAWS.

ALL DIMENSIONS ARE REFERENCE ONLY

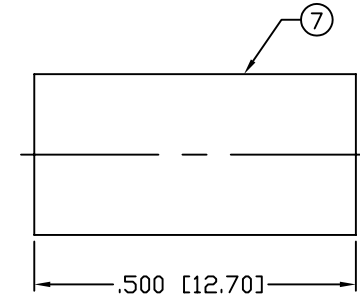
PART NO.

RQA-5000-C1

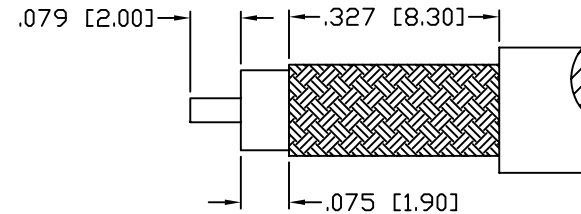
REV	DESCRIPTION	DWN	DATE	APPROVED
-	ENGINEERING RELEASE	CZS	3/8/04	JDMc



PIN TO BE SOLDERED



RECOMMENDED CRIMP DIE: .213"



RECOMMENDED STRIPPING DIM'S

SPECIFICATIONS:

IMPEDANCE: 50 Ohms
 FREQUENCY RANGE: 0-6 GHz
 INSULATION RESISTANCE: 5k M Ohms min.
 TEMPERATURE RANGE: -65°C TO 165°C
 FOR: RG-223, RG-55, RG-142

1	BODY	1	BRASS	WHITE B, 80μ"	008974	DRAWN C. ZUNIGA 3/9/04	3/9/04
2	GROUND RING	1	PHOS. BRNZ	WHITE B, 80μ"			
3	INSULATOR	1	PTFE	---			
4	FERRULE STUD	1	BRASS	WHITE B, 80μ"			
5	SHELL	1	BRASS	WHITE B, 80μ"			
6	PIN	1	BRASS	GOLD, 30μ"			
7	FERRULE	1	BRASS	WHITE B, 80μ"			
8							
9							
10						CHECKED	
11							
12							
13						ORJ DRAWN C. ZUNIGA	3/9/04
14							
#	DESCRIPTION	QTY	MATERIAL	FINISH	APPROVALS	DATE	

UNLESS OTHERWISE SPECIFIED:

DIMENSIONS ARE IN INCHES
 AND [MILLIMETERS]
 UNLESS OTHERWISE NOTED
 TOLERANCES ARE:

DECIMALS DIAMETER

RF connectors
 DIVISION OF RF INDUSTRIES, LTD.

7610 MIRAMAR RD
 SAN DIEGO, CA 92126
 (858) 549-6340
 (858) 549-6345 FAX

QMA PLUG, QUICK MATE

CRIMP / SOLDER

SIZE	CABLE GROUP	DWG NO.	REV
A	C1	RQA-5000-C1	-
SCALE:	NTS	CAD FILE	OUTLINE
			SHEET 1 OF 1