

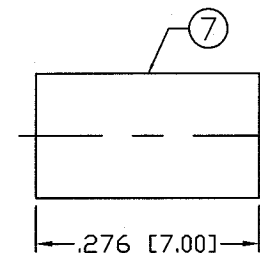
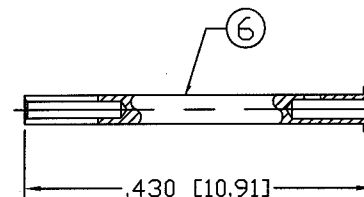
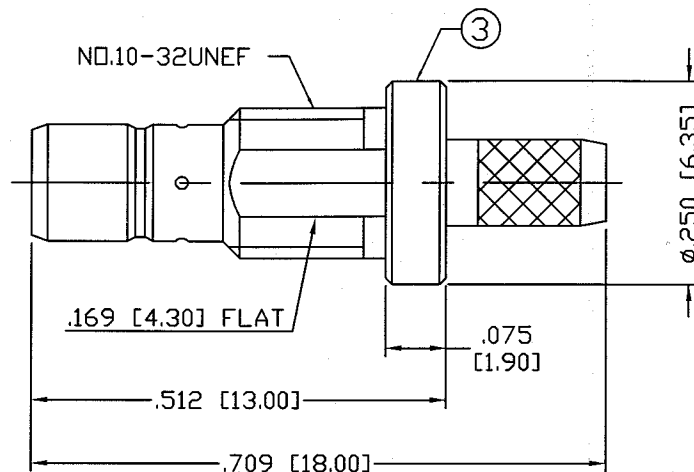
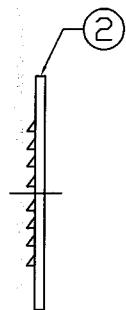
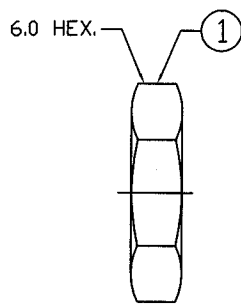
THIS DRAWING CONTAINS INFORMATION PROPRIETARY TO RF INDUSTRIES,
 ANY UNAUTHORIZED USE OF THIS DRAWING IS EXPRESSLY PROHIBITED
 WITHOUT WRITTEN PERMISSION FROM RF INDUSTRIES.
 ANY VIOLATION IS PUNISHABLE UNDER U.S. COPYRIGHT LAWS.

ALL DIMENSIONS ARE REFERENCE ONLY

PART NO.

RP-4252-B

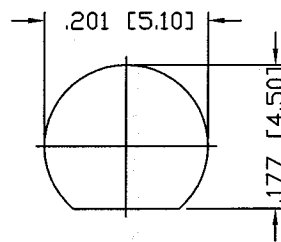
REV	DESCRIPTION	DWN	DATE	APPROVED
-	ENGINEERING RELEASE	CZS	7/1/00	JDMc
A	CHANGED DIM'S ON CONTACT, INSULATOR, BODY, STRIPPING.	JDM	8/24/01	JDMc
B	CHANGED TOLERANCE ON LOCKING GROOVE DIA. (BODY)	JDM	10/19/01	JDMc



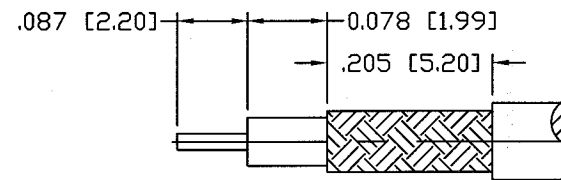
SPECIFICATIONS:

IMPEDANCE: 50 Ohms
 FREQUENCY RANGE: 0 TO 4 GHz
 WORKING VOLTAGE: 335 VRMS
 INSERTION LOSS: < -2 dB
 VSWR: 1.3:1 Max.
 TEMPERATURE RANGE: -65° / +155° C.
 MATING CYCLES: 500 Min.
 PANEL MOUNT TORQUE: 6 in/Lbs. ± 1 in/Lbs.

For [B] RG-174, 188, 188A, 316/U, ALPHA 9174, 9316,
 BELDEN 8216, 83269, 83284, 84316 & TIMES LMR-100A CABLE



RECOMMENDED
 PANEL CUTOUT



RECOMMENDED
 CABLE STRIPPING DIMENSIONS

#	DESCRIPTION	QTY	MATRL	FINISH	APPROVALS	DATE
1	HEX NUT, 015-40X-001-BN	1	BRASS	Nickel, 100 Micro		
2	WASHER, 018-40X-001-BN	1	BRASS	Nickel, 100 Micro		
3	BODY, 099-RP-SMB-J-BN	1	BRASS	Nickel, 100 Micro		
4	INSUL, 099-RP-SMB-J-BN	1	PTFE	NONE		
5	CONTACT, 008-40F-002-CG	1	Be. Cu.	Gold, 30 Micro		
6	FERRULE, 066-40X-001-BN	1	BRASS	Nickel, 100 Micro		
7						
8						
9						
10						
11						
12						
13						
14						

007777 (008974)	
0000712	
DRAWN JDMc	10/19/01
CHECKED	10-19-01
ORJ DRAWN C. ZUNIGA	3/19/01

UNLESS OTHERWISE SPECIFIED:
 1. REMOVE ALL BURRS
 2. BREAK ALL CORNERS & EDGES .005 R. MAX.
 3. CHAMFER 1ST & LAST THREADS 45°
 4. SURFACE ROUGHNESS 63 FINISH MIL-STD-10
 5. DIAMETERS ON COMMON CENTERS TO BE CONCENTRIC WITHIN .002 T.I.R.
 6. ALL DIMENSIONS ARE AFTER PLATING.

DIMENSIONS ARE IN INCHES AND [MILLIMETERS]
 UNLESS OTHERWISE NOTED TOLERANCES ARE:
 DECIMALS .XXX±.003 [.08]
 .XX±.005 [.13]
 DIAMETER .XXX±.001 [.03]
 .XX±.003 [.08]

RF connectors
 DIVISION OF RF INDUSTRIES, LTD.

7610 MIRAMAR RD
 SAN DIEGO, CA 92126
 (858) 549-6340
 (858) 549-6345 FAX

SMB JACK, REVERSE POLARITY
 CRIMP, REAR MOUNT BULKHEAD

SIZE A	CABLE GROUP B	DWG NO. RP-4252-B	REV B
SCALE: NTS		CAD FILE OUTLINE	SHEET 1 OF 1