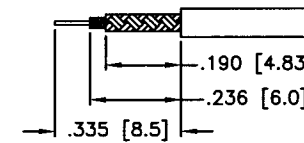
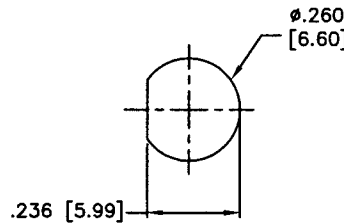
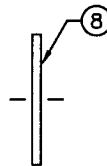
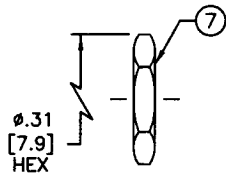
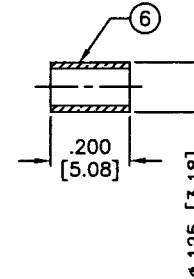
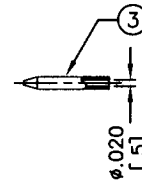
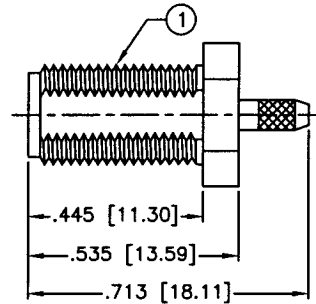
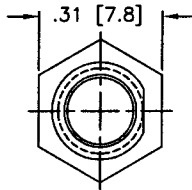


THIS DRAWING CONTAINS INFORMATION PROPRIETARY TO RF INDUSTRIES,
 ANY UNAUTHORIZED USE OF THIS DRAWING IS EXPRESSLY PROHIBITED
 WITHOUT WRITTEN PERMISSION FROM RF INDUSTRIES.
 ANY VIOLATION IS PUNISHABLE UNDER U.S. COPYRIGHT LAWS.

PART NO.

RP-3252-A-06

REV	DESCRIPTION	DWN	DATE	APPROVED
-	ENGINEERING RELEASE	CZS	8/30/00	JDMc



SPECIFICATIONS:

IMPEDANCE: 50 OHMS
 VOLTAGE RATING: 375 VOLTS RMS
 FREQUENCY RANGE: 0-12.4 GHz
 INSERTION LOSS: <-.2 dB
 VSWR MAX: 1.3:1
 FOR RG-178/U CABLE

SUGGESTED MOUNTING CONFIGURATION

SUGGESTED STRIPPING INSTRUCTIONS

COMB BRAID BEFORE SLIDING FERRULE IN PLACE
 RECOMMENDED CRIMP DIE: .100
 PIN TO BE SOLDERED

ALL DIMENSIONS ARE REFERENCE ONLY

1	BODY	1	ST STEEL	NICKEL, 100 MICRO
2	CONTACT	1	BRASS	GOLD, 30 MICRO
3	CONTACT	1	BRASS	GOLD, 30 MICRO
4	DIELECTRIC	1	PTFE	----
5	DIELECTRIC	1	PTFE	----
6	FERRULE	1	BRASS	NICKEL, 100 MICRO
7	HEX NUT	1	BRASS	NICKEL, 100 MICRO
8	LOCK WASHER	1	BRASS	NICKEL, 100 MICRO
9				
10				
11				
12				
13				
14				
#	DESCRIPTION	QTY	MATRL	FINISH

008974

UNLESS OTHERWISE SPECIFIED:

1. REMOVE ALL BURRS
2. BREAK ALL CORNERS & EDGES .005 R. MAX.
3. CHAMFER 1ST & LAST THREADS 45°
4. SURFACE ROUGHNESS 63 FINISH MIL-STD-10
5. DIAMETERS ON COMMON CENTERS TO BE CONCENTRIC WITHIN .002 T.I.R.
6. ALL DIMENSIONS ARE AFTER PLATING.

DIMENSIONS ARE IN INCHES AND [MILLIMETERS]
 UNLESS OTHERWISE NOTED TOLERANCES ARE:

DECIMALS	DIAMETER
.XXX±.003 [.08]	.XXX±.001 [.03]
.XX±.005 [.13]	.XX±.003 [.08]

RF connectors
 DIVISION OF RF INDUSTRIES, LTD.

7610 MIRAMAR RD
 SAN DIEGO, CA 92126
 (858) 549-6340
 (858) 549-6345 FAX

SMA FEMALE BULKHEAD

REVERSE POLARITY, CRIMP

SIZE	CABLE GROUP	DWG NO.	REV
A	A	RP-3252-A-06	-
SCALE: NTS		CAD FILE OUTLINE	SHEET 1 OF 1