

# ENVELOPE / ASSEMBLY DRAWING

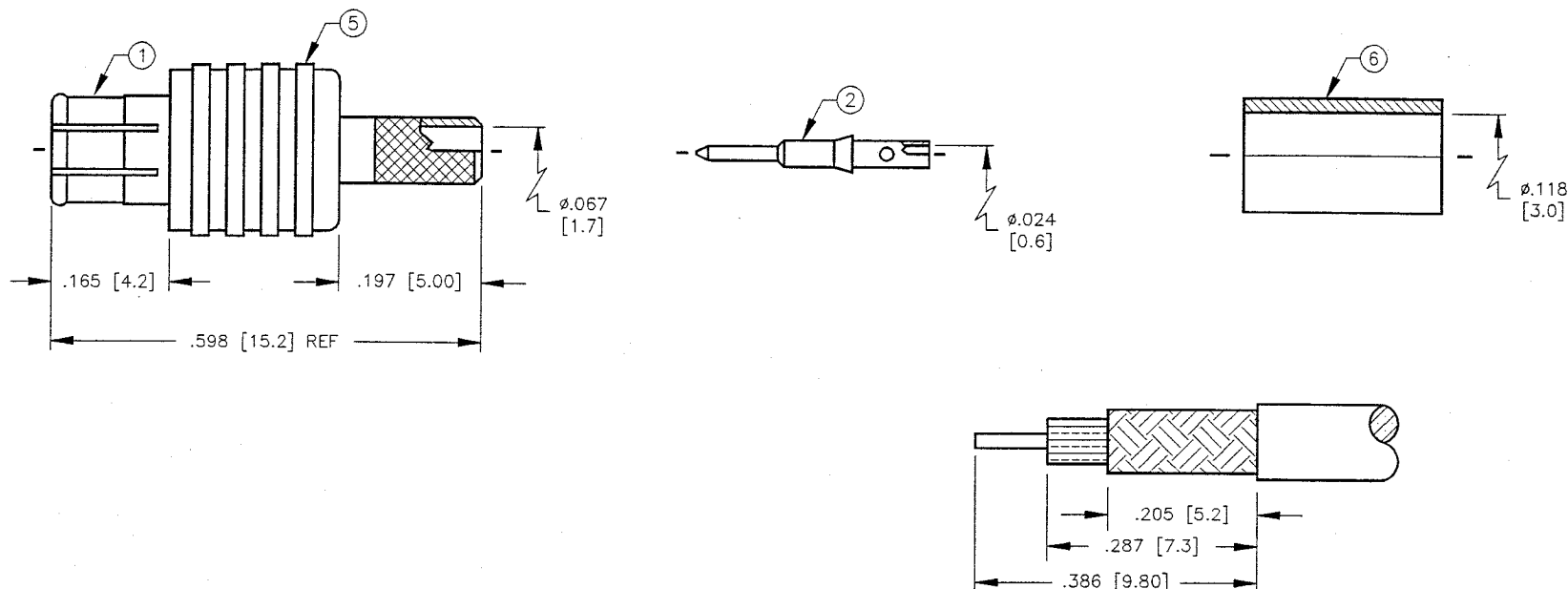
008974

## SPECIFICATION CONTROL DRAWING

THIS DRAWING CONTAINS INFORMATION PROPRIETARY TO RF INDUSTRIES, LTD. ANY UNAUTHORIZED USE OF THIS DRAWING IS EXPRESSLY PROHIBITED. ANY VIOLATION IS PUNISHABLE UNDER U.S. COPYRIGHT LAWS.

| REV | DESCRIPTION         | DWN | DATE     | APPROVED |
|-----|---------------------|-----|----------|----------|
| A   | ENGINEERING RELEASE | CZS | 11/10/97 | R. RICE  |
| B   | WAS RFX-8000-1B     | CZS | 6/3/99   | R. RICE  |

ALL DIMENSIONS ARE REFERENCE ONLY



SUGGESTED STRIPPING INSTRUCTIONS

SUGGESTED CRIMP DIES: .130  
PIN TO BE SOLDER

### SPECIFICATIONS:

IMPEDANCE: 50 OHMS  
 WORKING VOLTAGE: 335 VRMS @ SEA LEVEL  
 FREQUENCY RANGE: 0-6 GHz  
 INSERTION LOSS:  $\leq .1$  dB MAX/1 GHz  
 VSWR: 1.3 MAX @ 6 GHz  
 FOR RG-174, 188, 188A, 316/U, ALPHA 9174, 9316,  
 BELDEN 8216, 83269, 83284, 84316 & TIMES LMR-100A CABLE

DIMENSIONS ARE IN INCHES AND [MILLIMETERS]  
 UNLESS OTHERWISE NOTED TOLERANCES ARE:  
 DECIMALS DIAMETER

**RFconnectors**  
 DIVISION OF RF INDUSTRIES, LTD.

7610 MIRAMAR RD  
 SAN DIEGO, CA 92126  
 (619)549-6340  
 (619)549-6345 FAX

## RMX-8000-1B

MCX CRIMP PLUG

| ITEM | DESCRIPTION | QTY | MATERIAL | FINISH |
|------|-------------|-----|----------|--------|
| 6    | FERRULE     | 1   | COPPER   | GOLD   |
| 5    | HOUSING     | 1   | BRASS    | GOLD   |
| 4    | DIELECTRIC  | 1   | TEFLON   | NONE   |
| 3    | DIELECTRIC  | 1   | TEFLON   | NONE   |
| 2    | PIN         | 1   | BRASS    | GOLD   |
| 1    | BODY        | 1   | BeCu     | GOLD   |

|                             |          |
|-----------------------------|----------|
| DRAWN<br>C. ZUNIGA          | 6/3/99   |
| CHECKED<br><i>C. Zuniga</i> | 6/7/99   |
| APPROVED<br>C. ZUNIGA       | 11/10/97 |

|            |                  |                  |              |
|------------|------------------|------------------|--------------|
| SIZE<br>A  | CABLE GROUP<br>B | DWG NO.<br>8741  | REV<br>B     |
| SCALE: 4:1 |                  | CAD FILE 13ARC B | SHEET 1 OF 1 |