

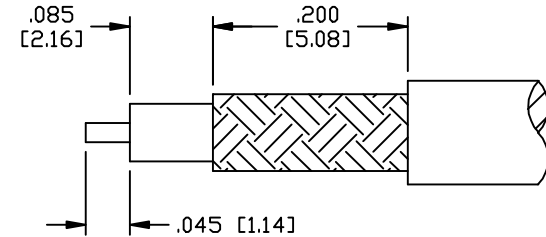
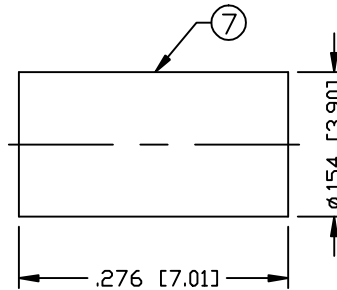
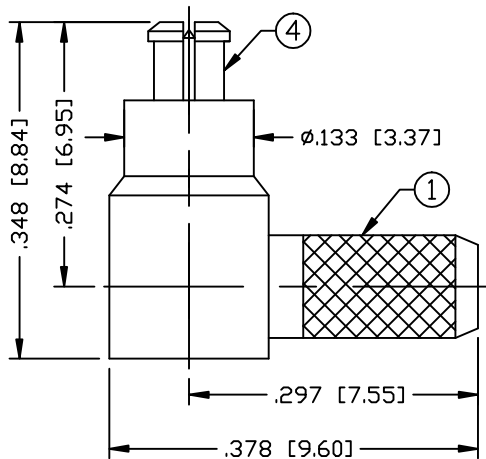
THIS DRAWING CONTAINS INFORMATION PROPRIETARY TO RF INDUSTRIES,
 ANY UNAUTHORIZED USE OF THIS DRAWING IS EXPRESSLY PROHIBITED
 WITHOUT WRITTEN PERMISSION FROM RF INDUSTRIES.
 ANY VIOLATION IS PUNISHABLE UNDER U.S. COPYRIGHT LAWS.

ALL DIMENSIONS ARE REFERENCE ONLY

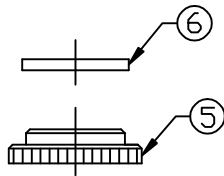
PART NO.

RMC-6010-B1

REV	DESCRIPTION	DWN	DATE	APPROVED
-	ENGINEERING RELEASE	CZS	9/4/00	JDMc



RECOMMENDED STRIPPING DIMENSIONS



IMPEDANCE: 50 OHMS
 FOR RG-316 DOUBLE SHIELD (RD-316)

1	BODY	1	BRASS	NICKEL, 100 MICRO
2	INSULATOR	1	PTFE	----
3	PIN	1	P. Cu.	GOLD, 30 MICRO
4	GROUND RING	1	Be. Cu.	GOLD, 3 MICRO
5	CAP	1	BRASS	NICKEL, 100 MICRO
6	INSULATOR	1	PTFE	----
7	FERRULE	1	BRASS	NICKEL, 100 MICRO
8				
9				
10				
11				
12				
13				
14				
#	DESCRIPTION	QTY	MATRL	FINISH

007777	
DRAWN	12/19/00
JDMs	
CHECKED	
ORJ DRAWN	12/19/00
C. ZUNIGA	
APPROVALS	DATE

UNLESS OTHERWISE SPECIFIED:
 1. REMOVE ALL BURRS
 2. BREAK ALL CORNERS & EDGES .005 R. MAX.
 3. CHAMFER 1ST & LAST THREADS 45°
 4. SURFACE ROUGHNESS 63 FINISH MIL-STD-10
 5. DIAMETERS ON COMMON CENTERS TO BE CONCENTRIC WITHIN .002 T.I.R.
 6. ALL DIMENSIONS ARE AFTER PLATING.

DIMENSIONS ARE IN INCHES AND [MILLIMETERS]
 UNLESS OTHERWISE NOTED TOLERANCES ARE:

DECIMALS	DIAMETER
.xxx±.003 [.08]	.xxx±.001 [.03]
.xx±.005 [.13]	.xx±.003 [.08]

RF connectors
 DIVISION OF RF INDUSTRIES, LTD.

7610 MIRAMAR RD
 SAN DIEGO, CA 92126
 (858) 549-6340
 (858) 549-6345 FAX

MC PLUG

RIGHT ANGLE, CRIMP

SIZE	CABLE GROUP	DWG NO.	REV
A	B1	RMC-6010-B1	-
SCALE:	NTS	CAD FILE	OUTLINE
			SHEET 1 OF 1