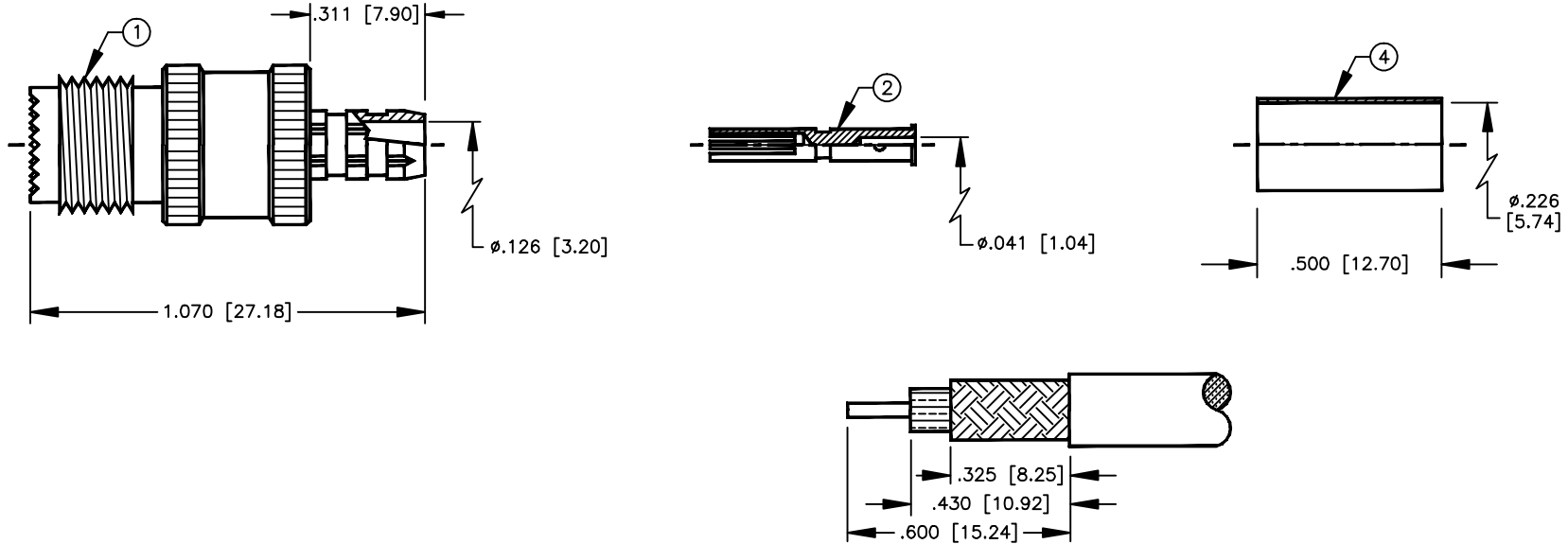


SPECIFICATION CONTROL DRAWING

THIS DRAWING CONTAINS INFORMATION PROPRIETARY TO RF INDUSTRIES, LTD. ANY UNAUTHORIZED USE OF THIS DRAWING IS EXPRESSLY PROHIBITED. ANY VIOLATION IS PUNISHABLE UNDER U.S. COPYRIGHT LAWS.

REV	DESCRIPTION	DWN	DATE	APPROVED
A	ENGINEERING RELEASE	CZS	10/7/97	R. RICE

ALL DIMENSIONS ARE REFERENCE ONLY



SUGGESTED STRIPPING INSTRUCTIONS
SUGGESTED CRIMP DIE: .068 & .213

SPECIFICATIONS:

IMPEDANCE: 50 OHMS
WORKING VOLTAGE: 335 VRMS @ SEA LEVEL
FREQUENCY RANGE: 0-2.5 GHz
INSERTION LOSS: \leq -.2dB @ 2 GHz
VSWR MAX: 1.25:1 @ 2 GHz
FOR RG-55, 55A, 55B, 142, 142A, 142B & 223/U,
ALPHA 9055, 9055B, 9223, BELDEN 8219, 83242, 84142, 9907

DIMENSIONS ARE IN INCHES AND [MILLIMETERS]		UNLESS OTHERWISE NOTED TOLERANCES ARE:		7610 MIRAMAR RD SAN DIEGO, CA 92126 (619)549-6340 (619)549-6345 FAX	
DECIMALS	DIAMETER	<div style="text-align: center;"> <h1>RF connectors</h1> <p>DIVISION OF RF INDUSTRIES, LTD.</p> <h2>RFU-601-C1</h2> <p>MINI UHF FEMALE CRIMP</p> </div>			
DRAWN C. ZUNIGA	10/7/97	SIZE A	CABLE GROUP C1	DWG NO. 8769	REV A
CHECKED		SCALE: 2:1		CAD FILE 13ARC B	SHEET 1 OF 1
ORJ DRAWN C. ZUNIGA	10/7/97				
APPROVALS	DATE				

ITEM	DESCRIPTION	QTY	MATERIAL	FINISH
5	PRESS FIT WASHER	1	BRASS	NICKEL
4	FERRULE [FER-10C1]	1	**BRASS	**NICKEL
3	DIELECTRIC	1	*DELTRIN	NONE
2	CONTACT [CON-203]	1	BRASS	SILVER
1	BODY	1	BRASS	NICKEL