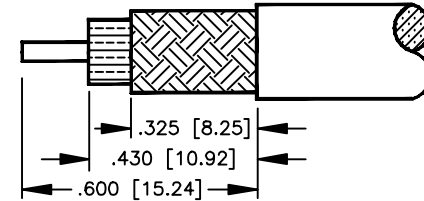
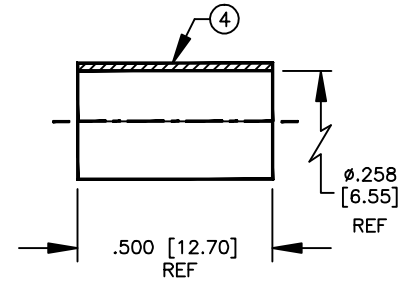
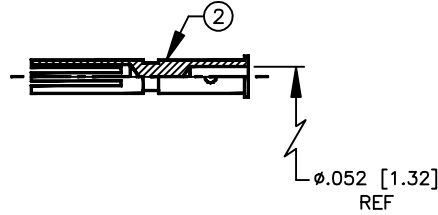
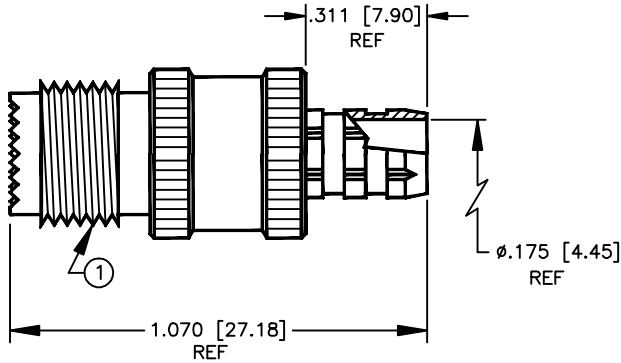


SPECIFICATION CONTROL DRAWING

THIS DRAWING CONTAINS INFORMATION PROPRIETARY TO RF INDUSTRIES, LTD. ANY UNAUTHORIZED USE OF THIS DRAWING IS EXPRESSLY PROHIBITED. ANY VIOLATION IS PUNISHABLE UNDER U.S. COPYRIGHT LAWS.

REV	DESCRIPTION	DWN	DATE	APPROVED
A1	ENGINEERING RELEASE	CJ	3/16/92	J. BENZ
B1	STANDARDIZE DRAWING, REPLACES DWG# 7440	CJ	11/4/92	J. BENZ
C	STANDARDIZE	BMA	3/19/97	J. BENZ



SUGGESTED STRIPPING INSTRUCTIONS
SUGGESTED CRIMP DIE: .068 & .255

SPECIFICATIONS:

IMPEDANCE: 50 OHMS
WORKING VOLTAGE: 335 VRMS @ SEA LEVEL
FREQUENCY RANGE: 0-2.5
INSERTION LOSS: ≤ -2 dB @ 2 GHz
VSWR MAX: 1.25:1 @ 2 GHz
FOR ANTENNA SPECIALIST K214 & PRO-FLEX 800, TIMES AA3096 & COMM/SCOPE 2278 & 2279 CABLE

DIMENSIONS ARE IN INCHES AND [MILLIMETERS]

UNLESS OTHERWISE NOTED TOLERANCES ARE:

DECIMALS DIAMETER

RF connectors
DIVISION OF RF INDUSTRIES, LTD.

7610 MIRAMAR RD
SAN DIEGO, CA 92126
(619)549-6340
(619)549-6345 FAX

RFU-601-1P

MINI UHF FEMALE CRIMP

ITEM	DESCRIPTION	QTY	MATERIAL	FINISH	APPROVALS	DATE
5	PRESS FIT WASHER	1	BRASS	NICKEL		
4	FERRULE [FER-110]	1	**BRASS	**NICKEL		
3	DIELECTRIC	1	*DELTRIN	NONE		
2	CONTACT [CON-210]	1	BRASS	SILVER		
1	BODY	1	BRASS	NICKEL		

DRAWN	B. ASHLEY	3/19/97
CHECKED		
ORJ DRAWN	C. JONES	3/16/92

SIZE	CABLE GROUP	DWG NO.	REV
A	P	8034	C
SCALE:	2:1	CAD FILE	13ARC B
			SHEET 1 OF 1