

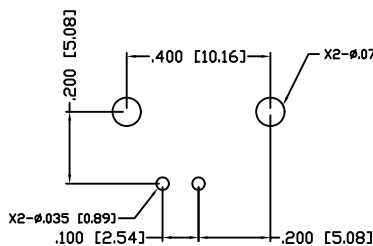
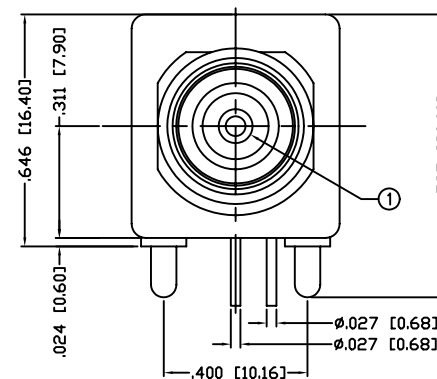
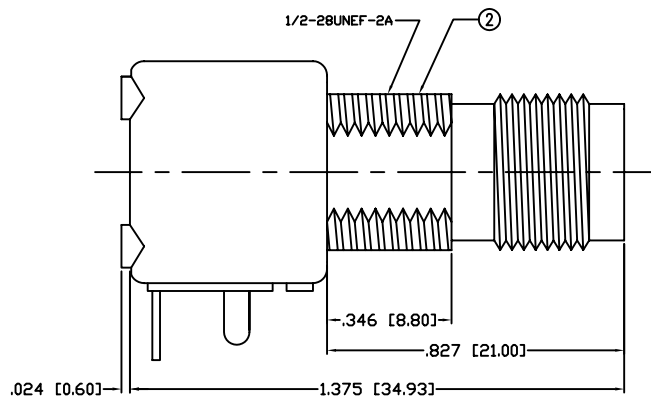
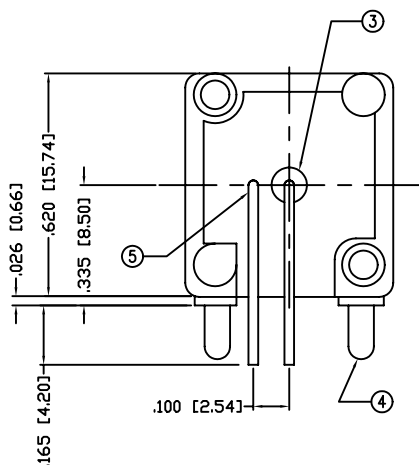
THIS DRAWING CONTAINS INFORMATION PROPRIETARY TO RF INDUSTRIES,
 ANY UNAUTHORIZED USE OF THIS DRAWING IS EXPRESSLY PROHIBITED
 WITHOUT WRITTEN PERMISSION FROM RF INDUSTRIES.
 ANY VIOLATION IS PUNISHABLE UNDER U.S. COPYRIGHT LAWS.

ALL DIMENSIONS ARE REFERENCE ONLY

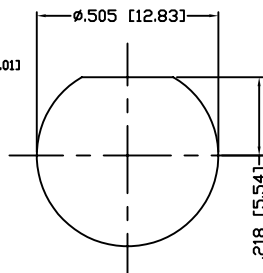
PART NO.

RFT-1208

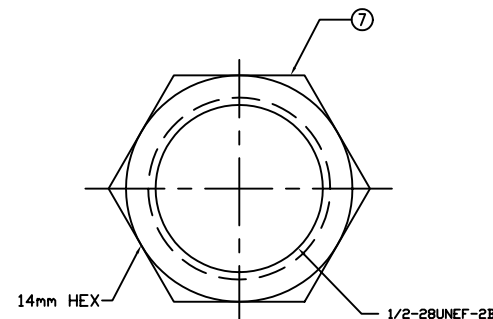
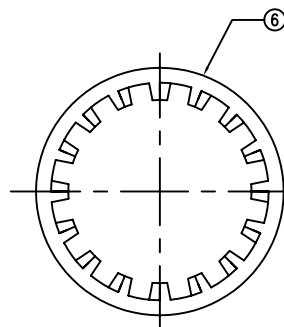
REV	DESCRIPTION	DWN	DATE	APPROVED
A	ENGINEERING RELEASE	CZS	8/5/99	RR
B	UPDATED DWG WITH DIMS, CHANGED DWG NUMBER FROM 9217	JDM	4/2/02	JDM



PCB HOLE CONFIGURATION



RECOMMENDED PANEL CUTOUT



SPECIFICATIONS:

IMPEDANCE: 50 Ohms
 FREQUENCY RANGE: 0-2 GHz
 WORKING VOLTAGE: 500 V rms @ sea level

1	CONTACT	1	PHOS BRNZ	GOLD, 3 μ"
2	BODY	1	ZINC (DIE)	NICKEL, 100 μ"
3	INSULATOR	1	PE-606	---
4	MOUNTING POST	1	BRASS	TIN LEAD
5	GROUND LEAD	1	PHOS BRNZ	TIN LEAD
6	LOCK WASHER	1	BRASS	NICKEL, 100 μ"
7	HEX NUT	1	BRASS	NICKEL, 100
8				
9				
10				
11				
12				
13				
14				
#	DESCRIPTION	QTY	MATRL	FINISH

000486	
DRAWN	JDMc
CHECKED	4/2/02
ORJ DRAWN	
C. ZUNIGA	8/5/99
APPROVALS	DATE

UNLESS OTHERWISE SPECIFIED:
 1. REMOVE ALL BURRS
 2. BREAK ALL CORNERS & EDGES .005 R. MAX.
 3. CHAMFER 1ST & LAST THREADS 45°
 4. SURFACE ROUGHNESS 63 FINISH MIL-STD-10
 5. DIAMETERS ON COMMON CENTERS TO BE CONCENTRIC WITHIN .002 T.I.R.
 6. ALL DIMENSIONS ARE AFTER PLATING.

DIMENSIONS ARE IN INCHES AND [MILLIMETERS]
 UNLESS OTHERWISE NOTED TOLERANCES ARE:
 DECIMALS DIAMETER
 .XXX±.003 [.08] .XXX±.001 [.03]
 .XX±.005 [.13] .XX±.003 [.08]

RF connectors
 DIVISION OF RF INDUSTRIES, LTD.

7610 MIRAMAR RD
 SAN DIEGO, CA 92126
 (858) 549-6340
 (858) 549-6345 FAX

TNC, JACK			
RIGHT ANGLE, PCB MOUNT, DIECAST			
SIZE A	CABLE GROUP N/A	DWG NO. RFT-1208	REV B
SCALE: NTS	CAD FILE OUTLINE	SHEET 1 OF 1	