

ENVELOPE / ASSEMBLY DRAWING

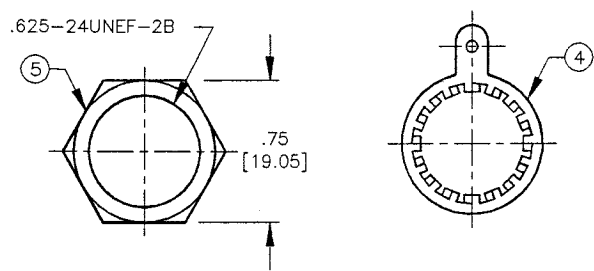
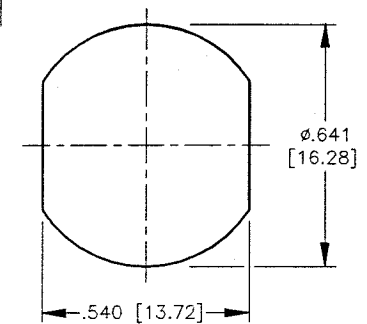
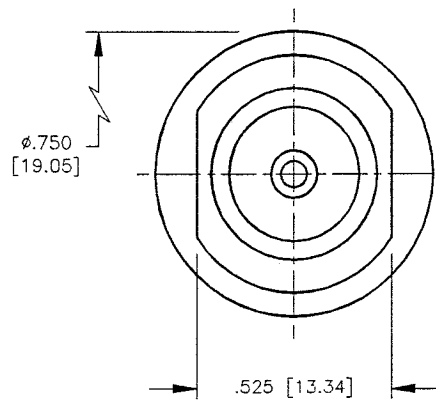
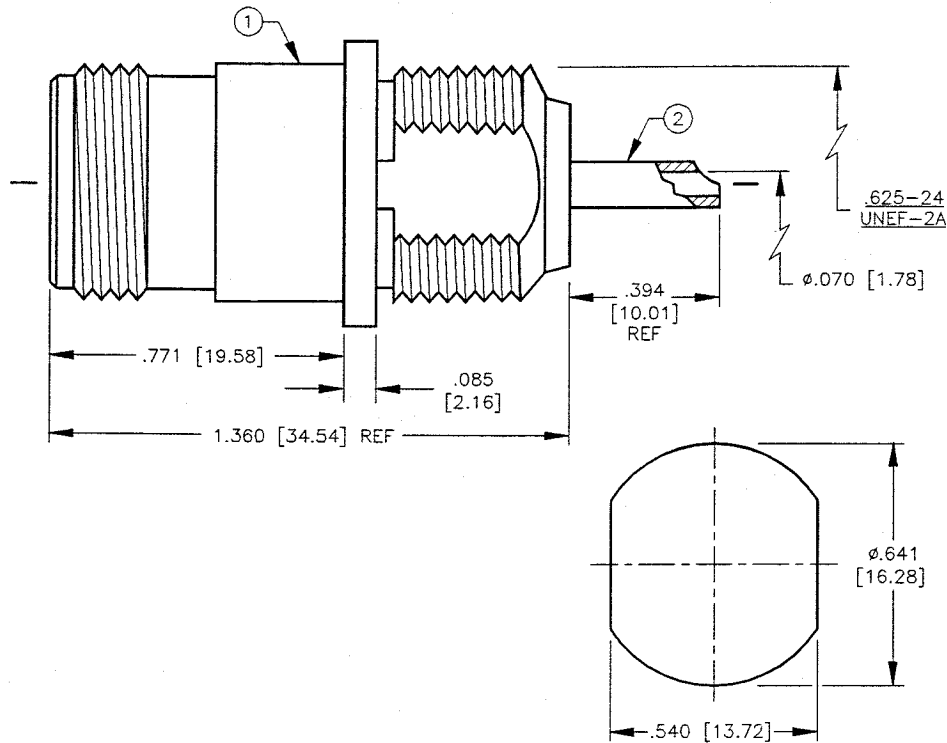
000000

SPECIFICATION CONTROL DRAWING

THIS DRAWING CONTAINS INFORMATION PROPRIETARY TO RF INDUSTRIES, LTD. ANY UNAUTHORIZED USE OF THIS DRAWING IS EXPRESSLY PROHIBITED. ANY VIOLATION IS PUNISHABLE UNDER U.S. COPYRIGHT LAWS.

REV	DESCRIPTION	DWN	DATE	APPROVED
A	ENGINEERING RELEASE	CZS	6/23/99	R. RICE

ALL DIMENSIONS ARE REFERENCE ONLY



NUT & SOLDER LUG NOT TO SCALE

SUGGESTED MOUNTING CONFIGURATION

SPECIFICATIONS:

IMPEDANCE: 50 OHMS NOMINAL
 WORKING VOLTAGE: 1000 VRMS @ SEA LEVEL
 FREQUENCY RANGE: 0-11 GHz
 INTERFACE PER MIL-STD-348A, SECTION 304.2

DIMENSIONS ARE IN INCHES AND [MILLIMETERS]

UNLESS OTHERWISE NOTED TOLERANCES-ARE:
 DECIMALS DIAMETER

RF connectors
 DIVISION OF RF INDUSTRIES, LTD.

7610 MIRAMAR RD
 SAN DIEGO, CA 92126
 (858) 549-6340
 (858) 549-6345 FAX

RFN-1022-3-03

N FEMALE LONG BULKHEAD

ITEM	DESCRIPTION	QTY	MATERIAL	FINISH
5	HEX NUT [HEX-625-24E]	1	BRASS	SILVER
4	LOCK SOLDER LUG [LKW-630]	1	BRASS	SILVER
3	DIELECTRIC	2	TEFLON	NONE
2	CONTACT	1	BRASS	GOLD
1	BODY	1	BRASS	SILVER

APPROVALS	DATE
DRAWN C. ZUNIGA	6/23/99
CHECKED <i>[Signature]</i>	6/24/99
OR. DRAWN C. ZUNIGA	6/23/99

SIZE	CABLE GROUP	DWG NO.	REV
A	N/A	9202	A

SCALE: 2:1 CAD FILE 13ARC B SHEET 1 OF 1