

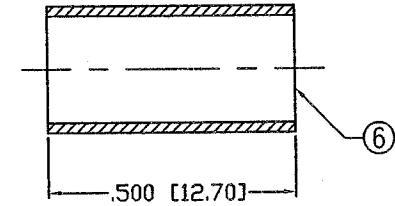
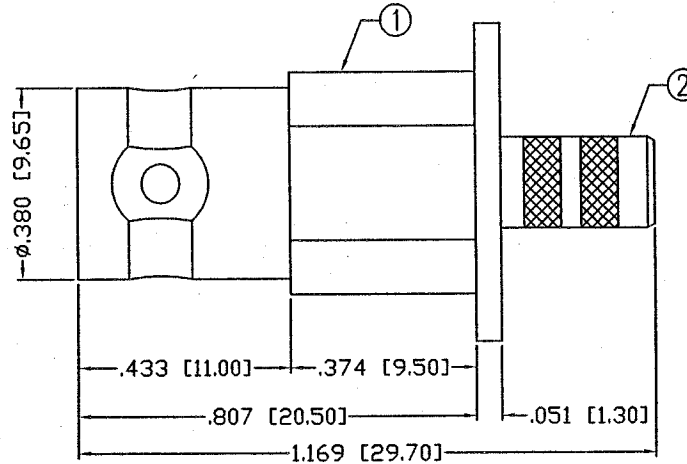
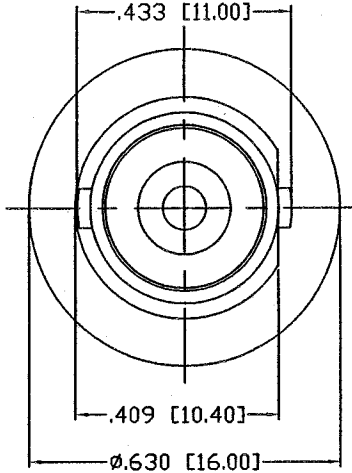
THIS DRAWING CONTAINS INFORMATION PROPRIETARY TO RF INDUSTRIES.  
 ANY UNAUTHORIZED USE OF THIS DRAWING IS EXPRESSLY PROHIBITED  
 WITHOUT WRITTEN PERMISSION FROM RF INDUSTRIES.  
 ANY VIOLATION IS PUNISHABLE UNDER U.S. COPYRIGHT LAWS.

ALL DIMENSIONS ARE REFERENCE ONLY

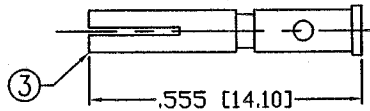
PART NO.

**RFB-1160**

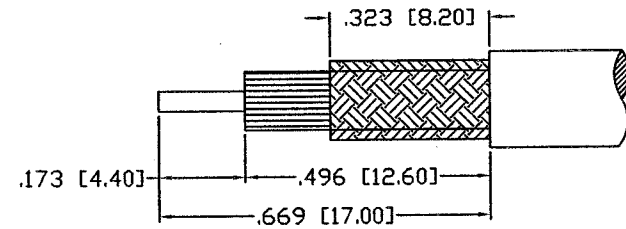
REV	DESCRIPTION	DWN	DATE	APPROVED
A1	ENGINEERING RELEASE	CJ	4/6/93	J. BENZ
B	CHANGE FERRULE OD / ID / FLANGE THICKNESS	KMM	8/6/93	C. JONES
C	ENGINEERING RELEASE	KMM	3/5/98	R. RICE
D	CHANGE STRIPPING INST. / EXTENDED THE PANEL MOUNT FLAT	CZS	2/19/01	JDMc



SUGGESTED CRIMP DIE: .213"



SUGGESTED CRIMP DIE: .068"



SUGGESTED STRIPPING INSTRUCTIONS

**SPECIFICATIONS:**

FOR RG-58, 58A, 58C, 141, 141A, BELDEN 8240,  
 8259, 8262, 9201, 9203, 9310, 9311 & COMM/SCOPE 0268

1	BODY	1	BRASS	NICKEL, 100 MICRO
2	FERRULE STUD	1	BRASS	NICKEL, 100 MICRO
3	PIN	1	BRASS	GOLD, 3 MICRO
4	INSULATOR	1	DELRIN	----
5	PRESS RING	1	BRASS	NICKEL, 100 MICRO
6	FERRULE	1	BRASS	NICKEL, 100 MICRO
7				
8				
9				
10				
11				
12				
13				
14				
#	DESCRIPTION	QTY	MATRL	FINISH

000486

UNLESS OTHERWISE SPECIFIED:

1. REMOVE ALL BURRS
2. BREAK ALL CORNERS & EDGES .005 R. MAX.
3. CHAMFER 1ST & LAST THREADS 45°
4. SURFACE ROUGHNESS 63 FINISH MIL-STD-10
5. DIAMETERS ON COMMON CENTERS TO BE CONCENTRIC WITHIN .002 T.I.R.
6. ALL DIMENSIONS ARE AFTER PLATING.

DIMENSIONS ARE IN INCHES AND [MILLIMETERS]

UNLESS OTHERWISE NOTED TOLERANCES ARE:

DECIMALS	DIAMETER
.XXX±.003 [.08]	.XXX±.001 [.03]
.XX±.005 [.13]	.XX±.003 [.08]

DRAWN	C. ZUNIGA	2/16/01
CHECKED	JDMc	2-19-01
ORJ DRAWN	C. ZUNIGA	2/16/01
APPROVALS		DATE

**RFconnectors**  
 DIVISION OF RF INDUSTRIES, LTD.

7610 MIRAMAR RD  
 SAN DIEGO, CA 92126  
 (858) 549-6340  
 (858) 549-6345 FAX

**BNC JACK**

FOR FLUSH MOUNT WALL PLATE

SIZE	CABLE GROUP	DWG NO.	REV
A	C	RFB-1160	D
SCALE:	NTS	CAD FILE	OUTLINE
		SHEET 1 OF 1	