

ENVELOPE / ASSEMBLY DRAWING

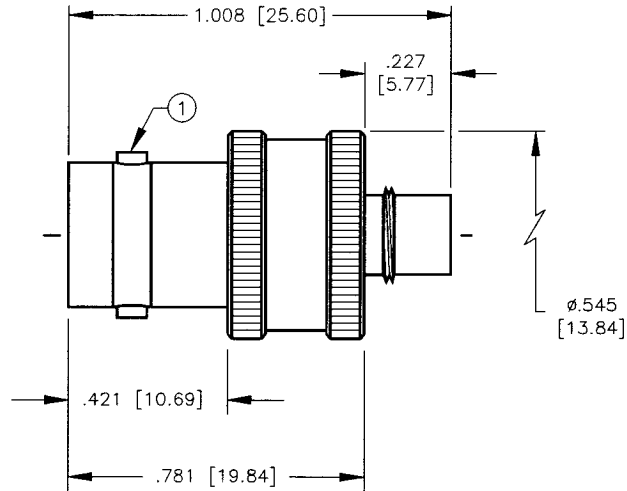
00000

SPECIFICATION CONTROL DRAWING

THIS DRAWING CONTAINS INFORMATION PROPRIETARY TO RF INDUSTRIES, LTD. ANY UNAUTHORIZED USE OF THIS DRAWING IS EXPRESSLY PROHIBITED. ANY VIOLATION IS PUNISHABLE UNDER U.S. COPYRIGHT LAWS.

REV	DESCRIPTION	DWN	DATE	APPROVED
A1	ADDITION OF NOTES / REPLACES DWG #7668	PB	11/3/92	J. BENZ
B	CREATE SECTION DWG	KMM	2/16/95	R. RICE
C	CHANGE CONTACT LENGTH	KMM	4/13/95	R. RICE
D	CHANGE DIE DIMENSION	CZS	9/23/98	R. RICE

ALL DIMENSIONS ARE REFERENCE ONLY



SPECIFICATIONS:

IMPEDANCE: 50 OHMS
 WORKING VOLTAGE: 335 VRMS @ SEA LEVEL
 FREQUENCY RANGE: 0-4 GHz
 INTERFACE PER MIL-STD-348A, SECTION 301.2

DIMENSIONS ARE IN INCHES AND [MILLIMETERS]

UNLESS OTHERWISE NOTED TOLERANCES ARE:
 DECIMALS DIAMETER

RF connectors
 DIVISION OF RF INDUSTRIES, LTD.

7610 MIRAMAR RD
 SAN DIEGO, CA 92126
 (619)549-6340
 (619)549-6345 FAX

RFB-1142-6

BNC FEMALE TO MOTOROLA SMA Q/D ADAPTER

4	PRESS FIT WASHER	1	BRASS	NICKEL	DRAWN C. ZUNIGA	9/23/98	SIZE A	CABLE GROUP N/A	DWG NO. 7808	REV D
3	DIELECTRIC	1	TEFLON	NONE	CHECKED <i>J. Benz</i>	9/29/98				
2	CONTACT	1	BRASS	GOLD	ORIG. DRAWN P. BREAUX	8/18/92				
1	BODY	1	BRASS	NICKEL						
ITEM	DESCRIPTION	QTY	MATERIAL	FINISH	APPROVALS	DATE	SCALE:	CAD FILE	SHEET	OF
							2:1	13ARC B	1	1