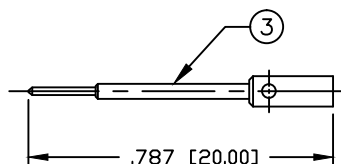
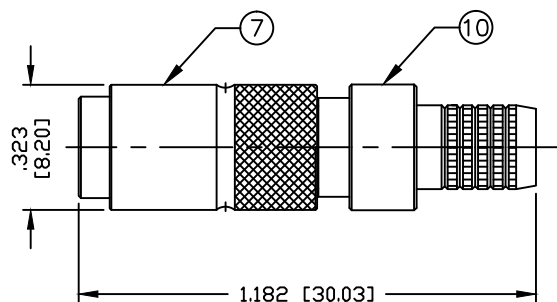


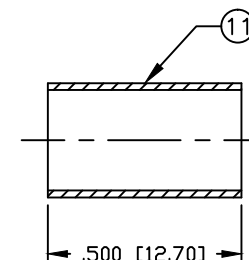
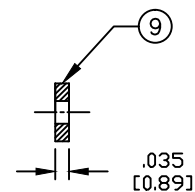
PART NO.

RF123-7003-X

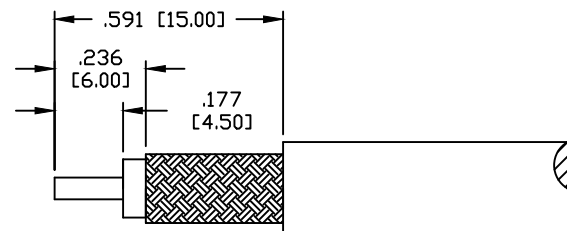
| REV | DESCRIPTION | DWN | DATE | APPROVED |
|-----|---|-----|----------|----------|
| A | ADDED SPACER / ADJUSTED STRIPING DIMENSIONS | CZS | 10/07/16 | JDMc |



SOLDER ONLY



RECOMMENDED CRIMP DIE: .255"



RECOMMENDED STRIPPING DIMENSIONS

SPECIFICATIONS:

IMPEDANCE: 50 Ohms
 FREQUENCY RANGE: 0-10 GHz
 WORKING VOLTAGE: 250 V rms @ sea level
 TEMPERATURE RANGE: -65°C TO 155°C
 INSULATION RESISTANCE: 5k M Ohms min.
 FOR RG-8/X, BELDEN 9258, MAXRAD M8X-100 & M8X-1000,
 MICRO 8/U, REMEE 1600, SAXTON 8315 & TIMES
 LMR-240 & LMR-240 ULTRAFLEX CABLE

| 11 | FERRULE | 1 | COPPER | NICKEL, 100 μ " |
|----|--------------|-----|----------|---------------------|
| 10 | FERRULE STUD | 1 | BRASS | NICKEL, 100 μ " |
| 9 | SPACER | 1 | PTFE | --- |
| 8 | RING | 1 | BRASS | NICKEL, 100 μ " |
| 7 | OUTER BODY | 1 | BRASS | NICKEL, 100 μ " |
| 6 | SPRING | 1 | SS | --- |
| 5 | BALL | 1 | SS | --- |
| 4 | GROUND RING | 1 | Be.Cu. | GOLD, 3 μ " |
| 3 | PIN | 1 | BRASS | GOLD, 3 μ " |
| 2 | INSULATOR | 1 | PTFE | --- |
| 1 | BODY | 1 | BRASS | NICKEL, 100 μ " |
| # | DESCRIPTION | QTY | MATERIAL | FINISH |

CUSTOMER
OUTLINE DRAWINGALL DIMENSIONS
ARE REFERENCE ONLYUNLESS OTHERWISE SPECIFIED:
DIMENSIONS ARE IN INCHES
AND [MILLIMETERS]DRAWN
C. ZUNIGA 10/07/16
CHECKEDORJ DRAWN
C. ZUNIGA 08/12/16**RoHS
COMPLIANT**

PROPRIETARY AND CONFIDENTIAL
 THIS DRAWING CONTAINS
 INFORMATION PROPRIETARY TO
 RF INDUSTRIES. ANY
 UNAUTHORIZED USE OF THIS
 DRAWING IS EXPRESSLY
 PROHIBITED WITHOUT WRITTEN
 PERMISSION FROM RF
 INDUSTRIES. ANY VIOLATION IS
 PUNISHABLE UNDER U.S.
 COPYRIGHT LAWS.

RFconnectors
 DIVISION OF RF INDUSTRIES, LTD. 7610 MIRAMAR RD.
 SAN DIEGO, CA 92126
 (858) 549-6340
 (858) 549-6345 FAX

1.0/2.3 PUSH-PULL PLUG
 CRIMP STYLE FOR LMR-240

| SIZE | CABLE GROUP | DWG NO. | REV |
|--------|-----------------|---------------------|--------------|
| A | N/A | RF123-7003-X | A |
| SCALE: | ENGINEERING ID: | 000000 | SHEET 1 OF 1 |
| NTS | | | |