

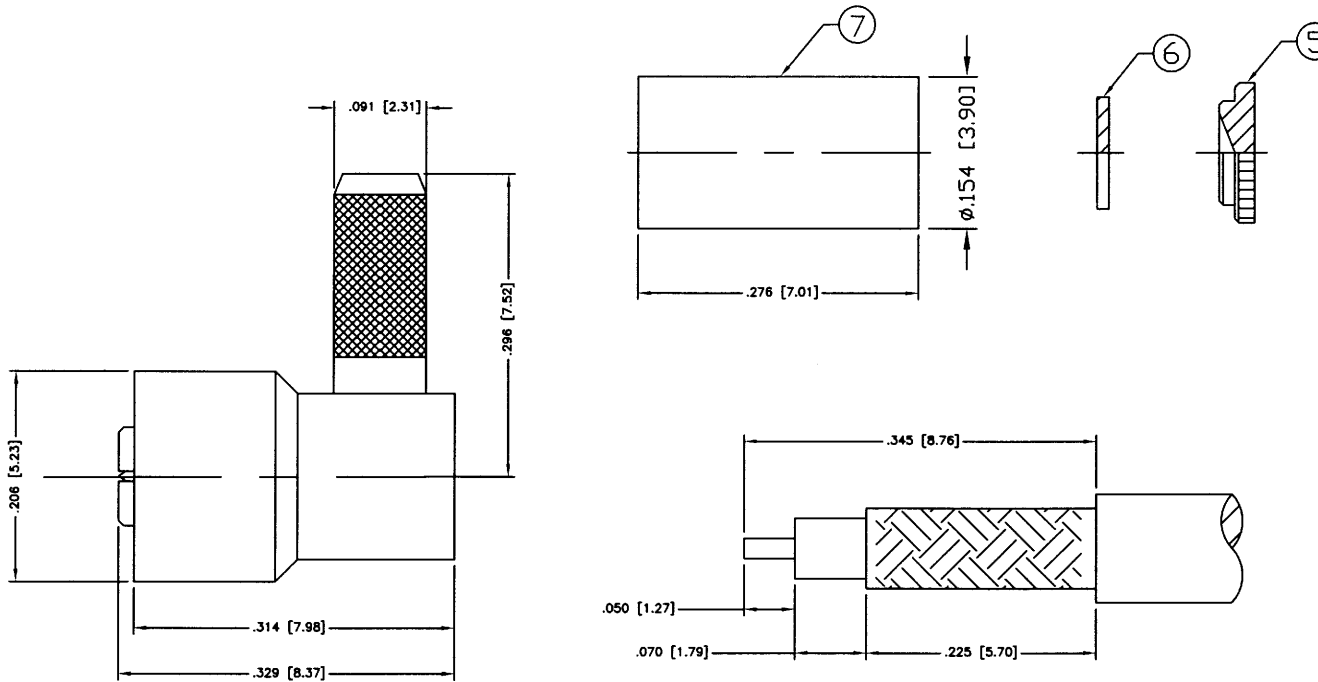
THIS DRAWING CONTAINS INFORMATION PROPRIETARY TO RF INDUSTRIES.
 ANY UNAUTHORIZED USE OF THIS DRAWING IS EXPRESSLY PROHIBITED
 WITHOUT WRITTEN PERMISSION FROM RF INDUSTRIES.
 ANY VIOLATION IS PUNISHABLE UNDER U.S. COPYRIGHT LAWS.

ALL DIMENSIONS ARE REFERENCE ONLY

PART NO.

RDM-6310-B

REV	DESCRIPTION	DWN	DATE	APPROVED
-	ENGINEERING RELEASE	JDM	10/10/03	JDMc



RECOMMENDED STRIPPING DIM'S

1	BODY	1	BRASS	NICKEL, 100 μ "	XXXXXXXX
2	PIN	1	BRASS	GOLD, 3 μ "	
3	INSULATOR	1	PTFE	WHITE	
4	GROUND RING	1	BE. CU.	GOLD, 3 μ "	
5	ENDCAP	1	BRASS	NICKEL, 100 μ "	
6	DISC	1	PTFE	WHITE μ "	
7	FERRULE	1	BRASS	NICKEL, 100 μ "	
8	COLLAR	1	BRASS	NICKEL, 100	
9					
10					
11					
12					
13					
14					
#	DESCRIPTION	QTY	MATRL	FINISH	APPROVALS

DRAWN
JDMc
CHECKED
ORJ DRAWN
JDMc
DATE
10/10/03
3/31/03

UNLESS OTHERWISE SPECIFIED:
 1. REMOVE ALL BURRS
 2. BREAK ALL CORNERS & EDGES .005 R. MAX.
 3. CHAMFER 1ST & LAST THREADS 45°
 4. SURFACE ROUGHNESS 63 FINISH MIL-STD-10
 5. DIAMETERS ON COMMON CENTERS TO BE CONCENTRIC WITHIN .002 T.I.R.
 6. ALL DIMENSIONS ARE AFTER PLATING.

DIMENSIONS ARE IN INCHES AND [MILLIMETERS]
 UNLESS OTHERWISE NOTED TOLERANCES ARE:
 DECIMALS .xxx±.003 [.08]
 DIAMETER .xx±.003 [.08]

RF connectors
 DIVISION OF RF INDUSTRIES, LTD.

7610 MIRAMAR RD
 SAN DIEGO, CA 92126
 (858) 549-6340
 (858) 549-6345 FAX

DMC PLUG, R/A CRIMP

SPECIAL FOR AP-600

SIZE A	CABLE GROUP B	DWG NO. RDM-6310-B	REV -
SCALE: NTS		CAD FILE OUTLINE	SHEET 1 OF 1