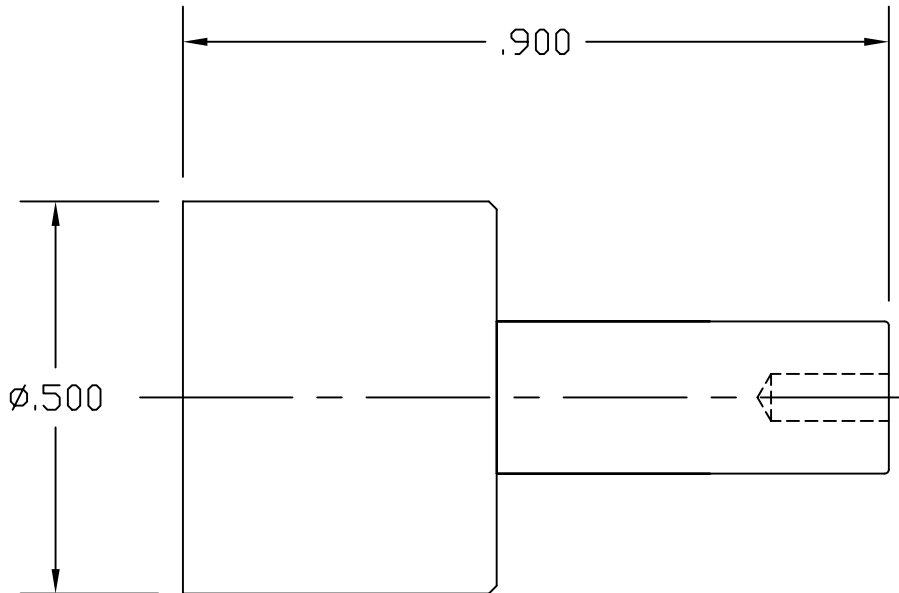


THIS DRAWING CONTAINS INFORMATION PROPRIETARY TO RF INDUSTRIES,
 ANY UNAUTHORIZED USE OF THIS DRAWING IS EXPRESSLY PROHIBITED
 WITHOUT WRITTEN PERMISSION FROM RF INDUSTRIES.
 ANY VIOLATION IS PUNISHABLE UNDER U.S. COPYRIGHT LAWS.

PART NO.

QMA-TOOL

REV	DESCRIPTION	DWN	DATE	APPROVED
-	ENGINEERING RELEASE	JDM	9/16/05	JDMc
A	CHANGE MATRL, MODIFY DIMS	JDM	10/19/05	JDMc



UNLESS OTHERWISE SPECIFIED:

1. REMOVE ALL BURRS
2. BREAK ALL CORNERS & EDGES .005 R. MAX.
3. CHAMFER 1ST & LAST THREADS 45°
4. SURFACE ROUGHNESS 63 FINISH MIL-STD-10
5. DIAMETERS ON COMMON CENTERS TO BE CONCENTRIC WITHIN .002 T.I.R.
6. ALL DIMENSIONS ARE AFTER PLATING.



7610 MIRAMAR RD
 SAN DIEGO, CA 92126
 (858) 549-6340
 (858) 549-6345 FAX

QMA ASSEMBLY TOOL

DIMENSIONS ARE IN INCHES
 AND [MILLIMETERS]
 UNLESS OTHERWISE NOTED
 TOLERANCES ARE:

DECIMALS	DIAMETER
.xxx±.003 [.08]	.xxx±.001 [.03]
.xx±.005 [.13]	.xx±.003 [.08]

SIZE A	CABLE GROUP	DWG NO. QMA-TOOL	REV A
SCALE: 3:1		CAD FILE DETAIL	SHEET 1 OF 1

1	RQA-5010-X	(LMR-240)	MATERIAL: SST.
2	RQA-5010-C	(LMR-195)	
6			PLATING
4			DRAWN
5			D. McREYNOLDS 9/16/05
3			CHECKED
7			ORJ DRAWN
8			
#	USED ON	USED ON	APPROVALS DATE