

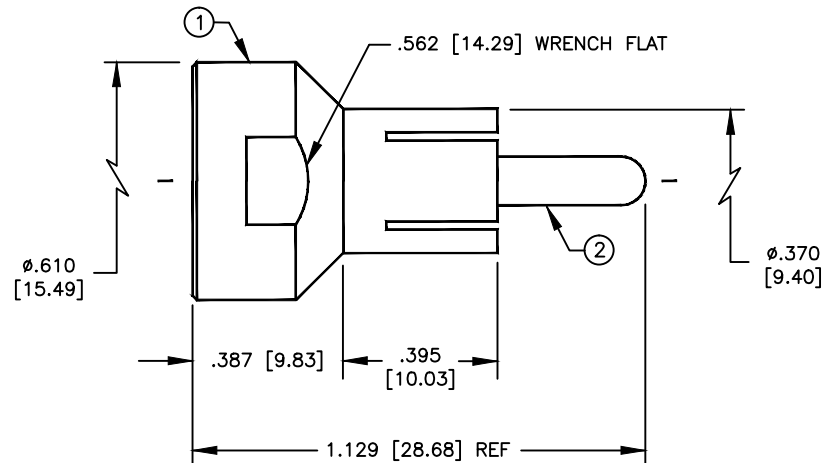
SPECIFICATION CONTROL DRAWING

THIS DRAWING CONTAINS INFORMATION PROPRIETARY TO RF INDUSTRIES, LTD. ANY UNAUTHORIZED USE OF THIS DRAWING IS EXPRESSLY PROHIBITED. ANY VIOLATION IS PUNISHABLE UNDER U.S. COPYRIGHT LAWS.

| REV | DESCRIPTION | DWN | DATE | APPROVED |
|-----|--|-----|---------|----------|
| A | ENGINEERING RELEASE | DB | 10/3/90 | J. BENZ |
| B | CREATE SECTION DRAWING | KMM | 6/17/94 | R. RICE |
| C | SHORTEN PIN | KMM | 7/20/94 | R. RICE |
| D | SEPARATE BODY VIEW / ADD DIM TO PIN / REMOVE P/N | CZS | 7/22/99 | R. RICE |

ALL DIMENSIONS ARE REFERENCE ONLY

00000



SPECIFICATIONS:

IMPEDANCE: 50 OHMS
 WORKING VOLTAGE: 100 VRMS @ SEA LEVEL
 FREQUENCY RANGE: 0-300 MHZ

DIMENSIONS ARE IN INCHES AND [MILLIMETERS]

UNLESS OTHERWISE NOTED TOLERANCES ARE:
 DECIMALS DIAMETER



7610 MIRAMAR RD
 SAN DIEGO, CA 92126
 (858) 549-6340
 (858) 549-6345 FAX

PT-4000-014

UNIDAPT TO RCA MALE

| ITEM | DESCRIPTION | QTY | MATERIAL | FINISH |
|------|------------------|-----|----------|--------|
| 4 | PRESS FIT WASHER | 1 | BRASS | SILVER |
| 3 | DIELECTRIC | 1 | PTFE | NONE |
| 2 | PIN | 1 | BRASS | GOLD |
| 1 | BODY | 1 | BRASS | SILVER |

| | |
|-------------------------|---------|
| DRAWN C. ZUNIGA | 7/22/99 |
| CHECKED | |
| ORJ DRAWN D. BRUMLEY | 10/3/90 |
| APPROVALS | DATE |

| | | | |
|------------|--------------------|-----------------|--------------|
| SIZE A | CABLE GROUP N/A | DWG NO. 7092 | REV D |
| SCALE: NTS | | CAD FILE | SHEET 1 OF 1 |