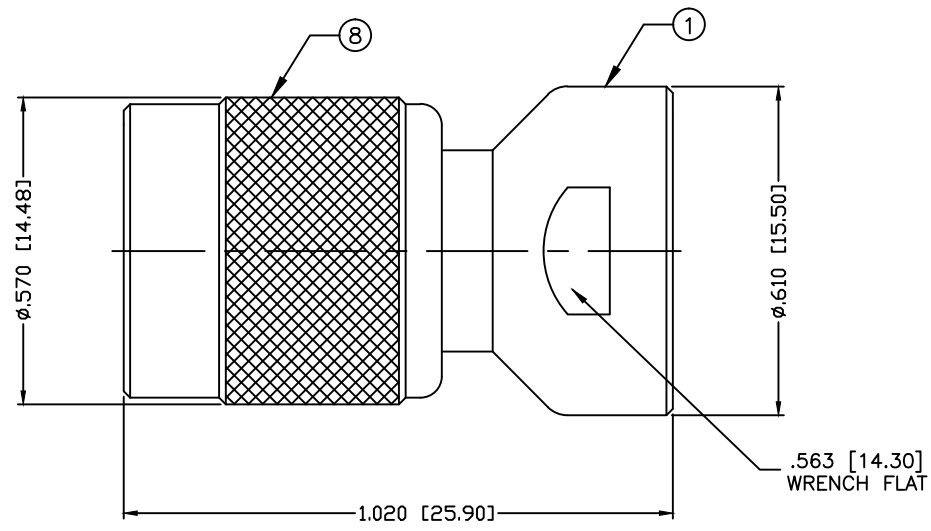


PART NO. PT-4000-005-WB

REV	DESCRIPTION	DWN	DATE	APPROVED
-	ENGINEERING RELEASE	CZS	02/10/11	JDMc



**SPECIFICATIONS:**

IMPEDANCE: 50 OHMS  
 WORKING VOLTAGE: 500 VRMS @ SEA LEVEL  
 FREQUENCY RANGE: 0-6 GHz  
 INSERTION LOSS: ≤ -.2 dB  
 VSWR MAX: 1.3:1

#	DESCRIPTION	QTY	MATERIAL	FINISH
8	SHELL	1	BRASS	WHITE BRONZE
7	RING	1	DELRIN	---
6	RETAINING RING	1	BRASS	WHITE BRONZE
5	GASKET	1	RUBBER	---
4	WASHER	1	BRASS	WHITE BRONZE
3	CONTACT	1	PHOS BRONZE	GOLD
2	INSULATOR	1	PTFE	---
1	BODY	1	BRASS	WHITE BRONZE

CUSTOMER OUTLINE DRAWING	
ALL DIMENSIONS ARE REFERENCE ONLY	
UNLESS OTHERWISE SPECIFIED: DIMENSIONS ARE IN INCHES AND [MILLIMETERS]	
DRAWN C. ZUNIGA	02/10/11
CHECKED	
ORJ DRAWN C. ZUNIGA	02/10/11

**RoHS COMPLIANT**

PROPRIETARY AND CONFIDENTIAL  
 THIS DRAWING CONTAINS  
 INFORMATION PROPRIETARY TO  
 RF INDUSTRIES. ANY  
 UNAUTHORIZED USE OF THIS  
 DRAWING IS EXPRESSLY  
 PROHIBITED WITHOUT WRITTEN  
 PERMISSION FROM RF  
 INDUSTRIES. ANY VIOLATION IS  
 PUNISHABLE UNDER U.S.  
 COPYRIGHT LAWS.

**RFconnectors** 7610 MIRAMAR RD.  
 SAN DIEGO, CA 92126  
 (858) 549-6340  
 DIVISION OF RF INDUSTRIES, LTD. (858) 549-6345 FAX

**UNIDAPT TO  
 TNC PLUG ADAPTER**

SIZE A	CABLE GROUP N/A	DWG NO. PT-4000-005-WB	REV ---
SCALE: NTS	ENGINEERING ID: 001560	SHEET 1 OF 1	