

PRODUCT SPECIFICATION DRAWING

P2RSA-3700-141-03

FINISH:
SHELL: PASSIVATED PER QQ-P-35C, TYPE II

BODY & PIN: GOLD OVER NICKEL

PERFORMANCE:
IMPEDANCE: 50 OHMS
FREQ. RANGE: DC TO 18 GHz
VSWR: 1.2:1 (MAX) @ DC-18 GHz
INSERTION LOSS: -.2db (MAX) @ 18 GHz
OPERATING TEMP RANGE: -65°C TO +85°C

MECHANICAL (TYP)
CONNECTOR: MATES WITH MIL-STD-348

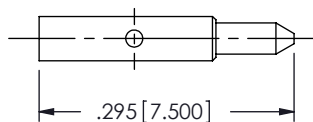
MATERIAL:
BODY & PIN: BRASS

SHELL: STAINLESS STEEL PER AMS-5640, TYPE 303, COND.A

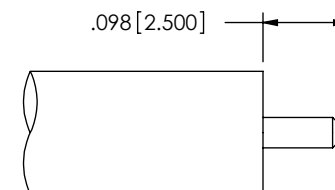
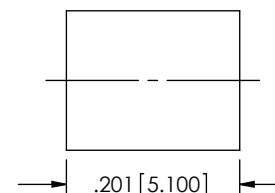
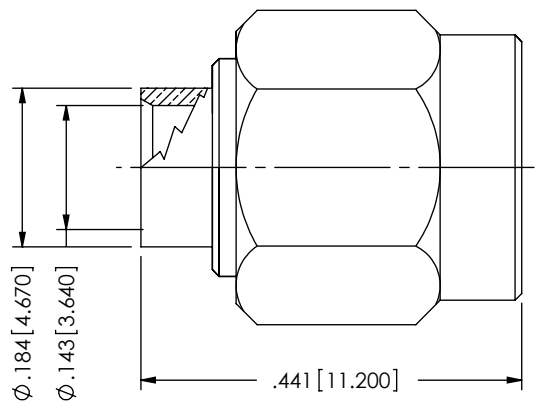
RETAINING RING: BERYLLIUM COPPER PER ASTM B196, ALLOY UNS C17300

GASKET: SILICONE RUBBER, ZZ-R-765 DUROMETER 70

INSULATOR: PTFE PER ASTM-D1710



SOLDER RECOMMENDED



RECOMMENDED STRIPPING DIMENSIONS

**RoHS
COMPLIANT**

PROPRIETARY

THE INFORMATION HEREIN IS CONFIDENTIAL AND PROPRIETARY. NO DISCLOSURE, REPRODUCTION, OR FURTHER DISSEMINATION MAY BE MADE WITHOUT THE EXPRESSED WRITTEN CONSENT OF RF INDUSTRIES.

DIMENSIONS ARE IN INCHES
TOLERANCES:

FRACTIONAL: ±1/64
ANGULAR: X° ±1'0"
X°X' ±15'

DECIMAL: .X ±.030
.XX ±.015
.XXX ±.005

INTERPRET DIMENSIONS AND TOLERANCES PER ASME Y14.5M - 1994

UNLESS OTHERWISE SPECIFIED

- 1) ALL DIMENSIONS ARE AFTER PLATING & HEAT TREATING.
- 2) BREAK CORNERS & EDGES .005 RADIUS MAX.
- 3) CHAMFER FIRST & LAST THREADS.
- 4) SURFACE ROUGHNESS 63 Y1 I.A.W. MIL-STD-10.
- 5) DIAMETERS ON COMMON CENTERS TO BE CONCENTRIC WITHIN T.I.R.
- 6) REMOVE ALL BURRS

DRAWN BY: C. ZUNIGA 06/10/10

ENG APPROVAL: D. McREYNOLDS

MFG APPROVAL: --

QA APPROVAL: --

RFP² RF PRECISION PRODUCTS
A DIVISION OF RF INDUSTRIES

7610 MIRAMAR ROAD, SAN DIEGO, CA 92126-4202
(858) 549-6340 - FAX (858) 549-6345 - RFP2@RFINDUSTRIES.COM

TITLE:

SMA PLUG DIRECT SOLDER

SIZE CODE DWG. NO.

A 008974

P2RSA-3700-141-03

SHEET 1 OF 1

REVISION HISTORY

REV	DESCRIPTION	DATE	APPROVED
-	ENGINEERING RELEASE	06/10/10	JDMc