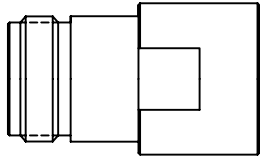


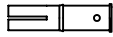
CABLE ASSEMBLY INSTRUCTIONS

RFN-1024-1

BODY



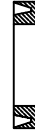
CONTACT



CLAMP



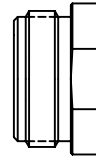
GASKET



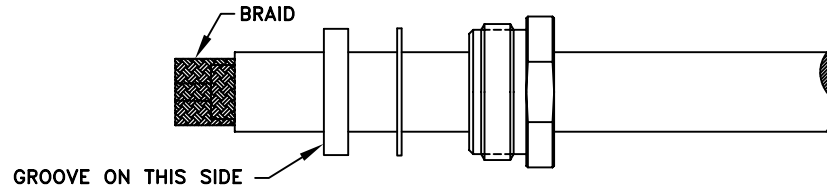
WASHER



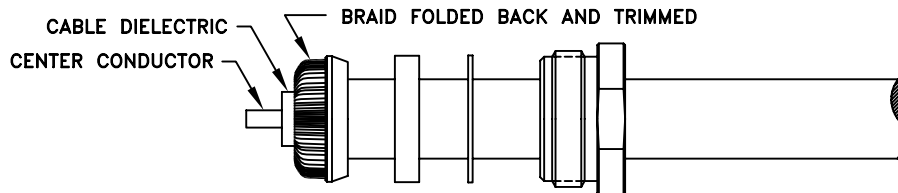
BACK NUT



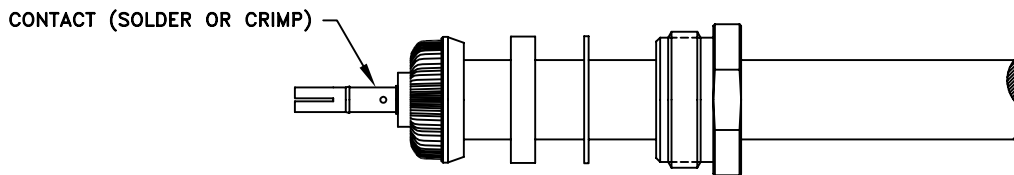
STEP 1



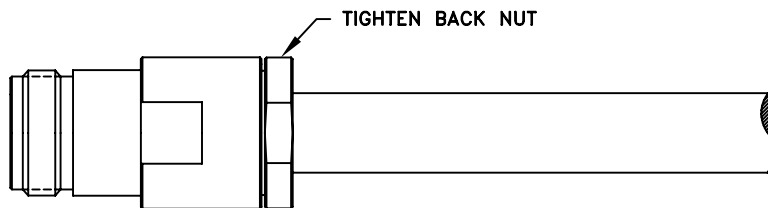
STEP 2



STEP 3



STEP 4



Step 1: Cut end of cable evenly. Strip cable to dimensions shown on outline drawing. All cuts are to be clean and square. Do not nick braid, dielectric or center conductor. Slide back nut, washer and gasket onto cable. Braid must be combed for assembly of clamp.

Step 2: Place the clamp over braid and push clamp back against cable jacket. Fold back braid wire and form over the clamp evenly. Trim extra braid if needed.

Step 3: Slide contact onto center conductor until it yields against the cable dielectric. Pre tin cable conductor if using stranded cable (optional). Solder or crimp contact in place. If soldering use minimum amount of heat.

Step 4: Properly seat groove of gasket onto clamp. Insert contact, cable and hardware into the body. Tighten back nut while holding body stationary.

RFN-1024-1 AP.DWG

RF CONNECTORS

05/04/06

7610 Miramar Road, San Diego, CA 92126-4202 - (858) 549-6340
(800) 233-1728 - Fax (858) 549-6345 E-mail: rfi@rfindustries.com - www.rfindustries.com

CZ