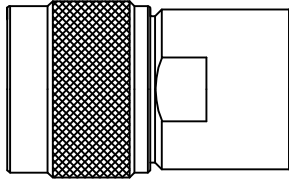


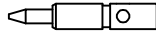
CABLE ASSEMBLY INSTRUCTIONS

RFN-1002-1S

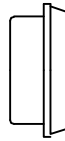
BODY



PIN



CLAMP



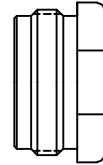
GASKET



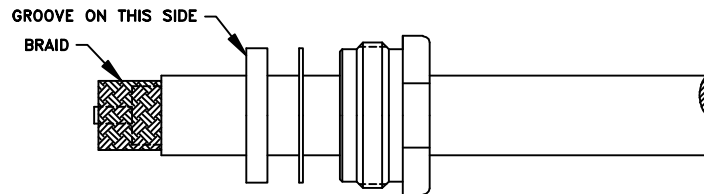
WASHER



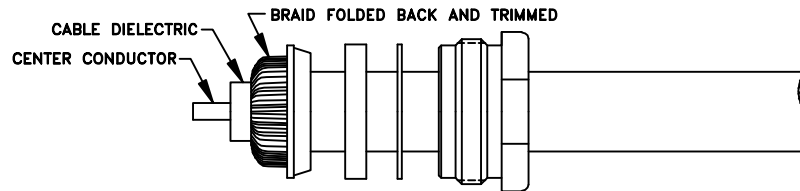
BACK NUT



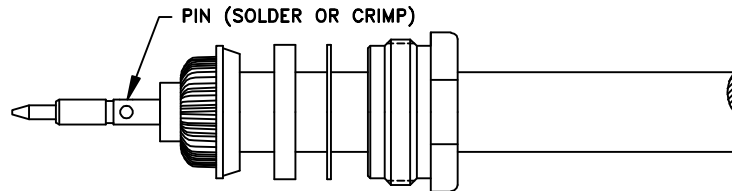
STEP 1



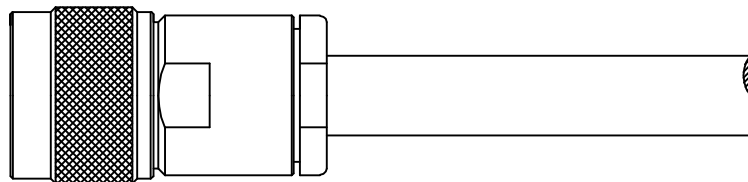
STEP 2



STEP 3



STEP 4



Step 1: Cut end of cable evenly. Strip cable to dimensions shown on outline drawing. All cuts are to be clean and square. Do not nick braid, dielectric or center conductor. Slide back nut, washer and gasket onto cable. Braid must be combed for assembly of clamp.

Step 2: Place the clamp over braid and push clamp back against cable jacket. Fold back braid wire and form over the clamp evenly. Trim extra braid if needed.

Step 3: Slide pin onto center conductor until it yields against the cable dielectric. Solder or crimp pin in place. If soldering use minimum amount of heat.

Step 4: Properly seat groove of gasket onto clamp. Insert pin, cable and hardware into the body. Tighten back nut while holding body stationary.

RFN-1002-1S AP.DWG

RF CONNECTORS

02/13/06

7610 Miramar Road, San Diego, CA 92126-4202 - (858) 549-6340
(800) 233-1728 - Fax (858) 549-6345 E-mail: rfi@rfindustries.com - www.rfindustries.com

CZ