

4.8dB Directional Coupler N Female, 380-2700MHz

RFDC-4.8DBA-NF

Low PIM

Low VSWR

Other Configurations Available

50 Ohms Impedance

RoHS Compliant

IP 67 Rated



GENERAL SPECIFICATIONS

Device Type	Directional Coupler
Interface	N Female
Color	Black
Dimensions.....	8.39" L x 3" W x 0.87" H
Bracket Included.....	Yes
Weight.....	1 lbs

ELECTRICAL SPECIFICATIONS

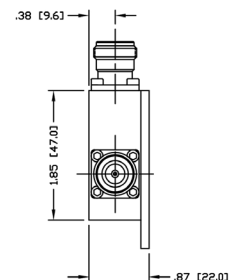
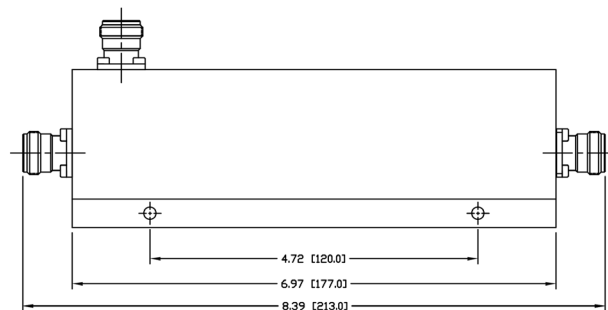
Operation Frequency Band.....	380-2700 MHz
3rd Intermodulation	≤ -155 dBc, (relative to carrier)
3rd Intermodulation Test Method.....	Two +43 dBm Carriers
Average Power	200 Watt
Coupling	4.8dB
Coupling Tolerance	± 1.2dB
Impedance.....	50Ω
Insertion Loss	≤ 2.15dB@380-2700 MHz
Directivity.....	≥ 20dB
Isolation	≥ 25dB@380-2700 MHz
Peak Power	1.5Kw
VSWR.....	≤ 1.25

MECHANICAL SPECIFICATIONS

Inner Contact Plating.....	Silver
Outer Plating.....	White Bronze (Tri-Metal)

ENVIRONMENTAL SPECIFICATIONS

Application	Indoor/Outdoor
Operating Temperature.....	-30°C ~ +75°C; -22°F ~ +167°F
Relative Humidity	Up to 100%
Regulatory Compliance / Certifications.....	RoHS / IP67



RF Industries

(NASDAQ: RFI)

7610 Miramar Road
San Diego, CA 92126

(800) 233-1728

(858) 549-6340

Fax: (858) 549-6345

rfi@rfindustries.com

www.rfindustries.com