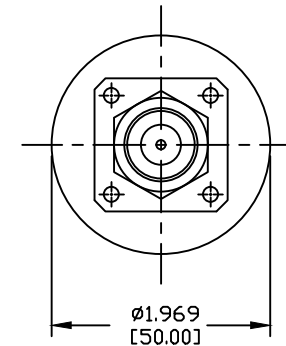
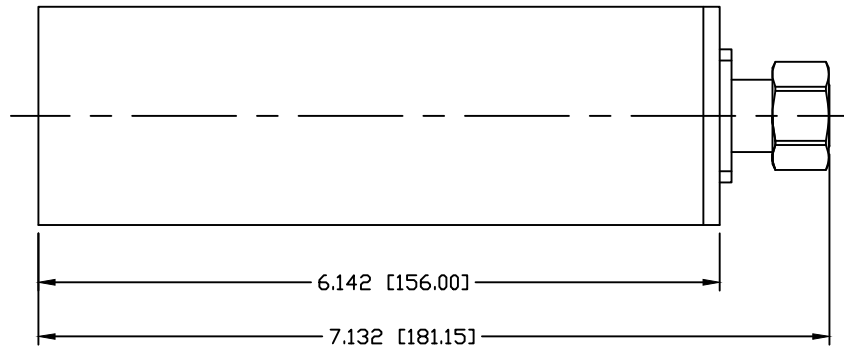


PART NO.

RFLOAD-43M10


REV	DESCRIPTION	DWN	DATE	APPROVED
A	UPDATED SPECS	CZS	12/19/19	JDMc

**SPECIFICATIONS:**

IMPEDANCE: 50 Ohms
 OPERATION FREQUENCY BAND: 350-2700MHz
 3RD ORDER IM: -160dBc (RELATIVE TO CARRIER)
 3RD ORDER IM TEST METHOD: 2x43dBm CARRIERS
 VSWR: $\leq 1.3:1$ @ 350-2700MHz
 AVERAGE POWER: 10W @ 350-2700MHz
 APPLICATION: INDOOR/OUTDOOR
 REGULATORY COMPLIANCE/CERTIFICATIONS: IP65
 TEMPERATURE RANGE: -30°C ~ +65°C
 COLOR: BLACK

NOTES:

CONNECTOR WILL HAVE PROTECTIVE CAP ON

CUSTOMER OUTLINE DRAWING		RoHS COMPLIANT	 7610 MIRAMAR RD. SAN DIEGO, CA 92126 (858) 549-6340 DIVISION OF RF INDUSTRIES, LTD. (858) 549-6345 FAX	
ALL DIMENSIONS ARE REFERENCE ONLY				
UNLESS OTHERWISE SPECIFIED: DIMENSIONS ARE IN INCHES AND [MILLIMETERS]		10 WATT TERMINATION LOAD 4.3-10 MALE - 350-2700 MHz		
DRAWN C. ZUNIGA CHECKED	12/19/19	PROPRIETARY AND CONFIDENTIAL THIS DRAWING CONTAINS INFORMATION PROPRIETARY TO RF INDUSTRIES, ANY UNAUTHORIZED USE OF THIS DRAWING IS EXPRESSLY PROHIBITED WITHOUT WRITTEN PERMISSION FROM RF INDUSTRIES. ANY VIOLATION IS PUNISHABLE UNDER U.S. COPYRIGHT LAWS.		REVISION A
DWG NO. RFLOAD-43M10	SCALE: NTS	CABLE GROUP	ENGINEERING ID: 000000	SHEET 1 OF 1
ORJ DRAWN C. ZUNIGA	09/07/18			