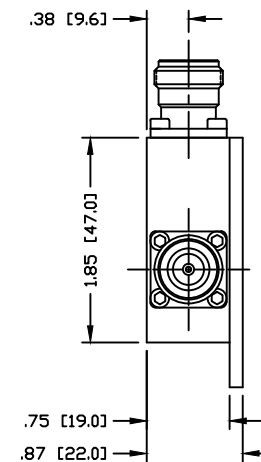
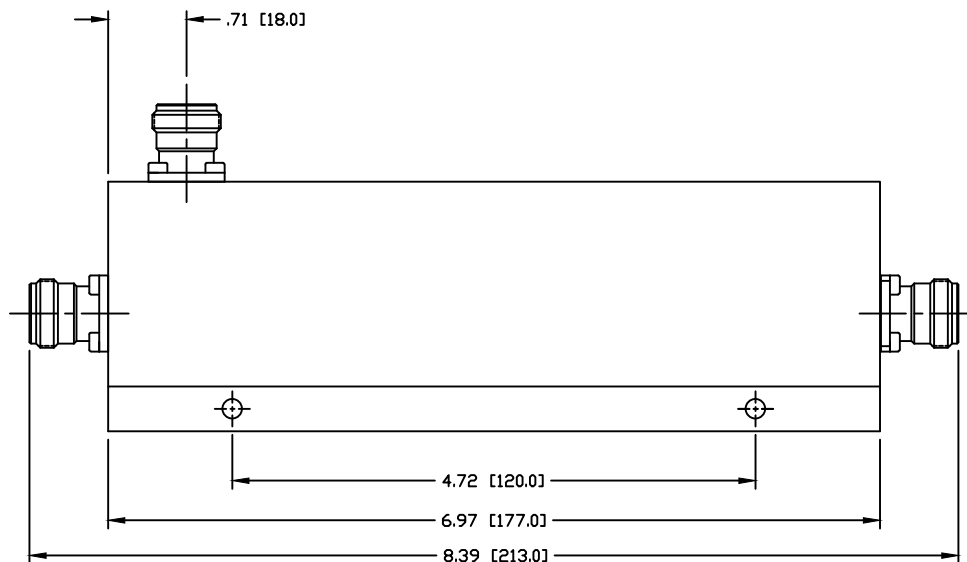


PART NO.

**RFDC-3DBA-NF**

REV	DESCRIPTION	DWN	DATE	APPROVED
-	ENGINEERING RELEASE	CZS	12/01/17	JDMc

SPECIFICATIONS:

IMPEDANCE: 50 Ohms

OPERATION FREQUENCY BAND: 380-2700 MHz

3RD INTERMODULATION:  $\leq -155$  dBc (RELATIVE TO CARRIER)

3RD INTERMODULATION TEST METHOD: TWO+43dBm CARRIERS

AVERAGE POWER: 200 WATT

INSERTION LOSS:  $\leq 3.6$ dB@380-2700MHz

PEAK POWER: 1.5Kw

COUPLING: -3dB

COUPLING TOLERANCE:  $\pm 1.2$ dBDIRECTIVITY:  $\geq 20$ dBISOLATION AT FREQUENCY BAND:  $\geq 23$ dB@380-2700MHzVSWR:  $\leq 1.25$ 

INNER CONTACT PLATING: SILVER

OUTER PLATING: WHITE BRONZE

OPERATION TEMPERATURE:  $-30^{\circ}\text{C} \sim +75^{\circ}\text{C}$ 

RELATIVE HUMIDITY: UP TO 100%

APPLICATION: INDOOR/OUTDOOR

REGULATORY COMPLIANCE/CERTIFICATIONS: RoHS/IP67

CUSTOMER  
OUTLINE DRAWINGALL DIMENSIONS  
ARE REFERENCE ONLYUNLESS OTHERWISE SPECIFIED:  
DIMENSIONS ARE IN INCHES  
AND [MILLIMETERS]DRAWN  
C. ZUNIGA 12/01/17

CHECKED

ORJ DRAWN  
C. ZUNIGA 12/01/17**RoHS**  
**COMPLIANT**PROPRIETARY AND CONFIDENTIAL  
THIS DRAWING CONTAINS  
INFORMATION PROPRIETARY TO  
RF INDUSTRIES, ANY  
UNAUTHORIZED USE OF THIS  
DRAWING IS EXPRESSLY  
PROHIBITED WITHOUT WRITTEN  
PERMISSION FROM RF  
INDUSTRIES. ANY VIOLATION IS  
PUNISHABLE UNDER U.S.  
COPYRIGHT LAWS.**RFconnectors**  
DIVISION OF RF INDUSTRIES, LTD.7610 MIRAMAR RD.  
SAN DIEGO, CA 92126  
(858) 549-6340  
(858) 549-6345 FAX**3 dB DIRECTIONAL COUPLER**  
**N FEMALE - 380-2700 MHz**

SIZE	CABLE GROUP	DWG NO.	REV
A		<b>RFDC-3DBA-NF</b>	—
SCALE:	ENGINEERING ID:	SHEET 1 OF 1	
NTS	000000		