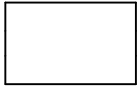


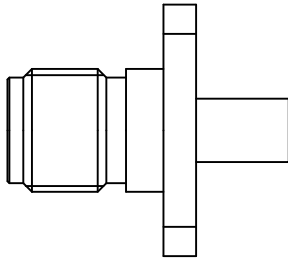
CABLE ASSEMBLY INSTRUCTIONS

RSA-3570-085

INSULATOR



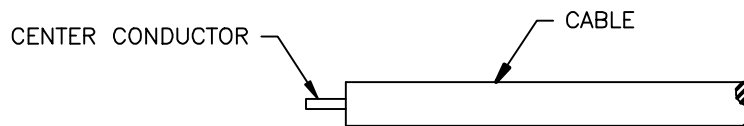
MAIN BODY



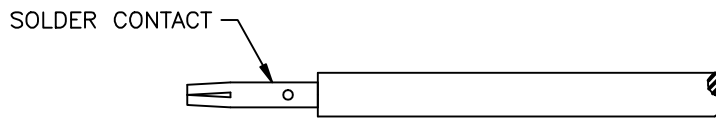
CONTACT



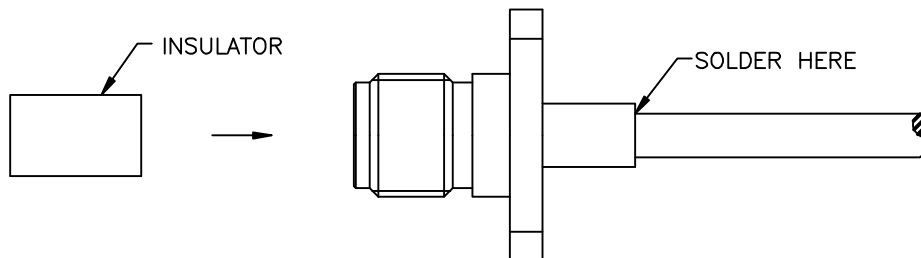
STEP 1



STEP 2



STEP 3



Step 1: Cut end of cable evenly. Strip cable to dimensions shown on outline drawing. All cuts are to be sharp and square. Remove burrs. Do not nick center conductor.

Step 2: Slide contact over center conductor until it yields against the cable dielectric. Solder contact to cable center conductor.

Step 3: Insert the contact into the main body. Solder the cable to the connector ferrule stud. Be careful not to over heat. Insert insulator into body until flush with the reference plane.

RSA-3570-085 AP.dwg

RF CONNECTORS

12/12/06

7610 Miramar Road, San Diego, CA 92126-4202 - (858) 549-6340
(800) 233-1728 - Fax (858) 549-6345 E-mail: rfi@rfindustries.com - www.rfindustries.com

JDM