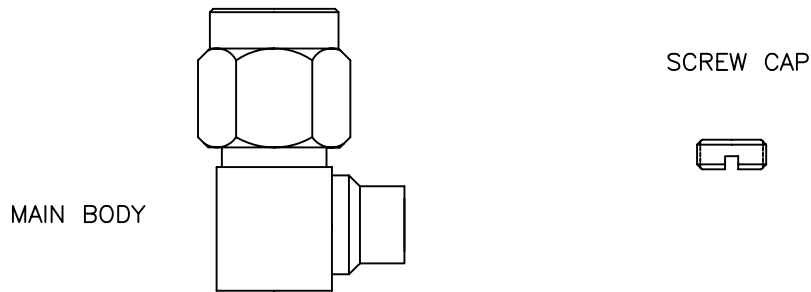
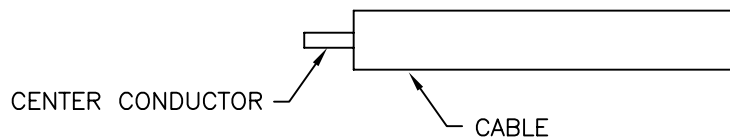


CABLE ASSEMBLY INSTRUCTIONS

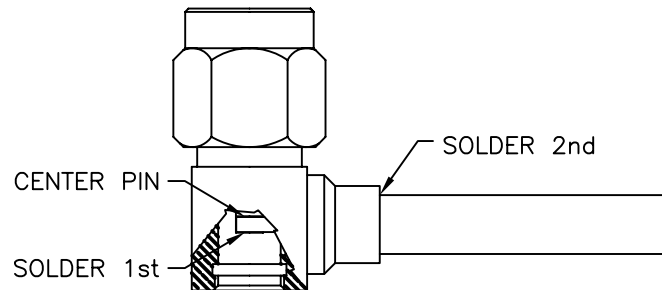
RSA-3510-1-141



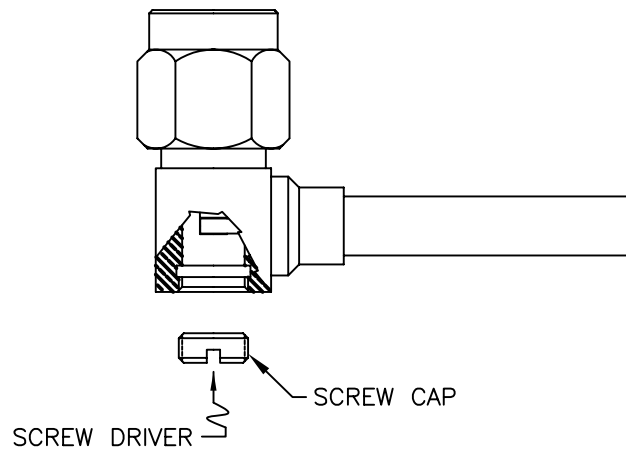
STEP 1



STEP 2



STEP 3



Step 1: Cut end of cable evenly. Strip cable to dimensions shown on the outline drawing. All cuts are to be sharp and square. Do not nick center conductor while cutting the dielectric. Remove any burrs.

Step 2: Insert cable into the connector body until the end of the cable center conductor is square to the end of the center conductor (pin) inside the connector. Cable center conductor should not extend past outer diameter of connector pin. Solder inner conductor to the connector's pin then solder the main body to the outer conductor of the cable.

Step 3: Tighten "screw cap" with flat head screw driver.

RSA-3510-1-141 AP.dwg

RF CONNECTORS

1/20/10

7610 Miramar Road, San Diego, CA 92126-4202 - (858) 549-6340
(800) 233-1728 - Fax (858) 549-6345 E-mail: rfi@rfindustries.com - www.rfindustries.com

jdm