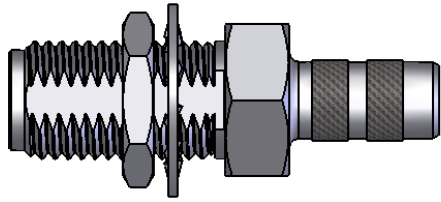


CABLE ASSEMBLY INSTRUCTIONS - RSA-3252-C



MAIN BODY

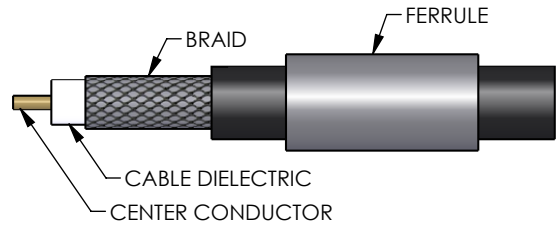


CONTACT

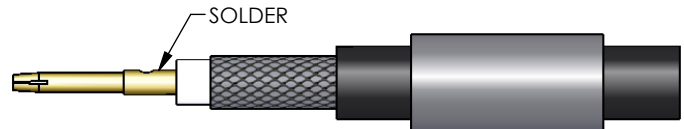


FERRULE

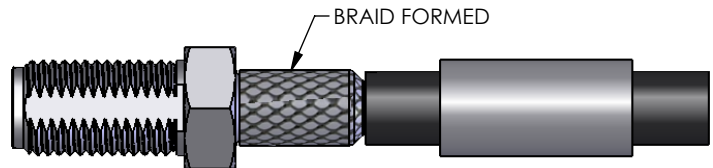
Cut end of cable evenly. Strip cable to dimensions shown on outline drawing. All cuts are to be clean and square. Do not nick braid, dielectric or center conductor. Slide ferrule over cable first. If using strain relief or tubing slide onto cable first.



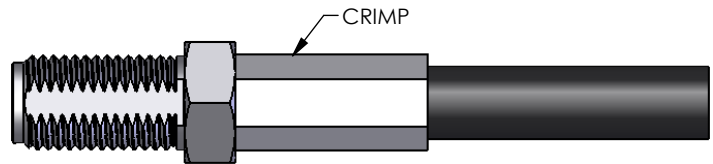
Pre tin cable conductor if using stranded cable (if needed.) Slide contact onto center conductor until it yields against the cable dielectric. Solder contact in place.



Slide ferrule stud under braid, while inserting the contact into body. Form braid over ferrule stud.



Slide ferrule over braid until it yields against the back of the connector. Crimp the ferrule with crimp tool as specified on connector drawing. Trim any extra braid extending out of ferrule end.



DRAWN BY C. ZUNIGA	DATE 04/25/13	APPROVED BY	DATE	DESCRIPTION SMA JACK CRIMP, BULHEAD FOR RG-58	DWG/PART # RSA-3252-C AP
-----------------------	------------------	-------------	------	--	------------------------------------

RF CONNECTORS

7610 Miramar Road, San Diego, CA 92126-4202 - (858) 549-6340
 (800) 233-1728 - Fax (858) 549-6345 E-mail: rfi@rfindustries.com - www.rfindustries.com