

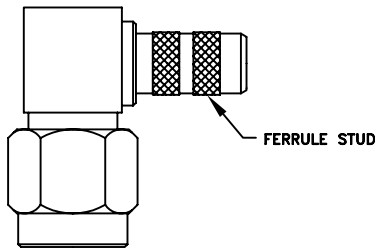
CABLE ASSEMBLY INSTRUCTIONS

RSA-3010-C1

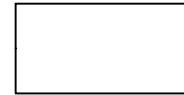
SCREW CAP



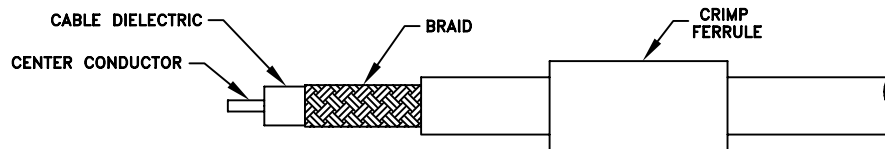
BODY



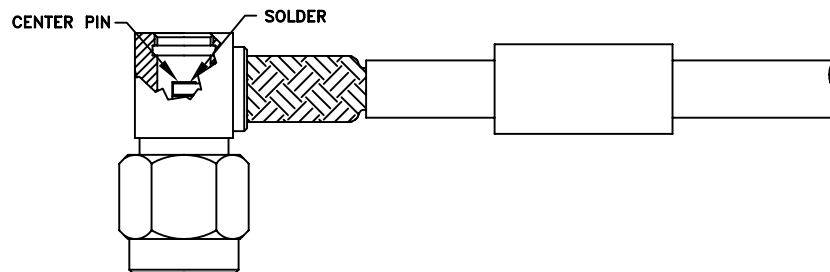
CRIMP FERRULE



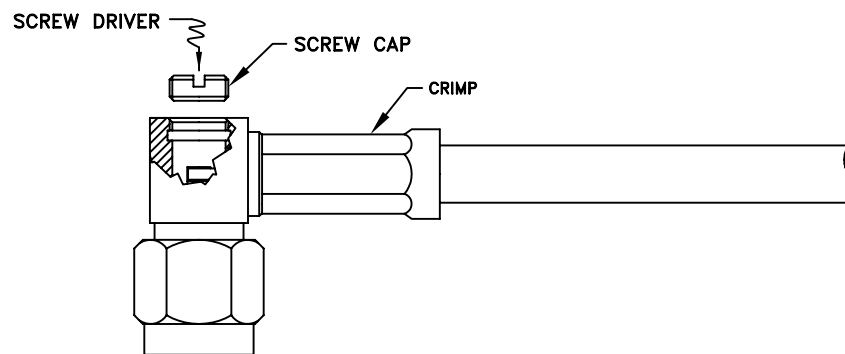
STEP 1



STEP 2



STEP 3



Step 1: Cut end of cable evenly. Strip cable to dimensions shown in catalog or on envelope drawing. All cuts are to be sharp and square. Do not nick braid, dielectric or center conductor. Slide ferrule over cable. If using strain relief or heat shrink tubing slide onto cable first.

Step 2: Pre tin cable conductor if using stranded cable. Slide ferrule stud under braid. Align cable inner conductor in pin slot. Solder the cable inner conductor to the slotted pin using minimum amount of heat. Cable center conductor should not extend past outer diameter of connector pin.

Step 3: Slide the ferrule over the braid until it butts against the back of the connector. Crimp the ferrule with crimp tool. Trim extra braid as necessary. Using a flat head screw driver tighten screw cap into connector.

RSA-3010-C1 AP.DWG

RF CONNECTORS

11/13/06

7610 Miramar Road, San Diego, CA 92126-4202 - (858) 549-6340
(800) 233-1728 - Fax (858) 549-6345 E-mail: rfi@rfindustries.com - www.rfindustries.com

CZ