

CABLE ASSEMBLY INSTRUCTIONS

RP-3252-1C1

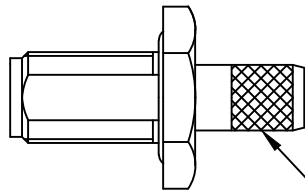
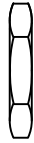
LOCK WASHER

HEX NUT

BODY

PIN

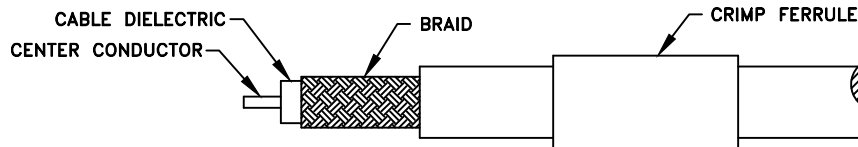
CRIMP FERRULE



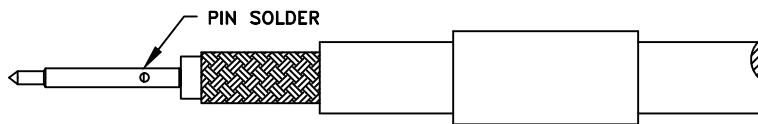
FERRULE STUD



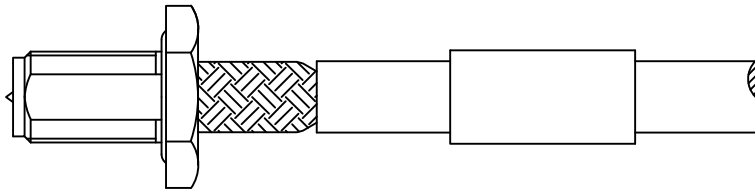
STEP 1



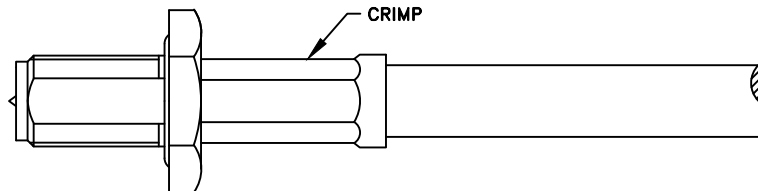
STEP 2



STEP 3



STEP 4



Step 1: Cut end of cable evenly. Strip cable to dimensions shown in catalog or on envelope/outline drawing. All cuts are to be clean and square. Do not nick braid or center conductor when cutting. Slide ferrule over cable. If using strain relief or heat shrink tubing slide onto cable first.

Step 2: Pre tin cable conductor if using stranded cable (if needed). Slide pin onto center conductor until it yields against the cable dielectric. Solder pin in place.

Step 3: Slide ferrule stud under braid, while inserting the pin into the body.

Step 4: Slide the ferrule over the braid until it yields against the back of the connector. Crimp the ferrule with crimp tool as specified on connector drawing. Trim extra braid (if any) extending out of ferrule end.

RP-3252-1C1 AP.DWG

RF CONNECTORS

10/30/06

7610 Miramar Road, San Diego, CA 92126-4202 - (858) 549-6340
(800) 233-1728 - Fax (858) 549-6345 E-mail: rfi@rfindustries.com - www.rfindustries.com

CZ