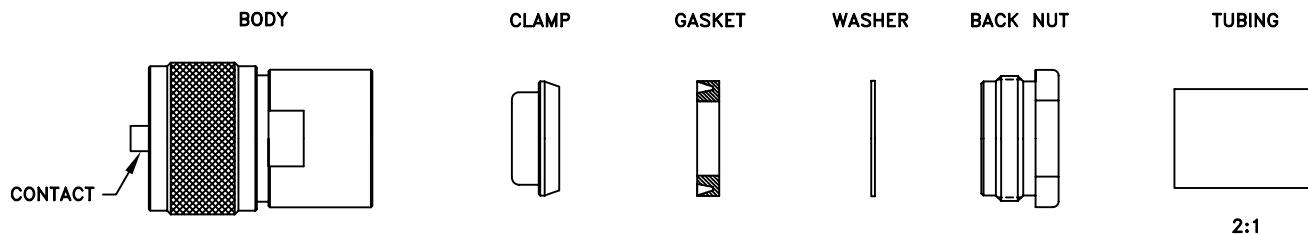
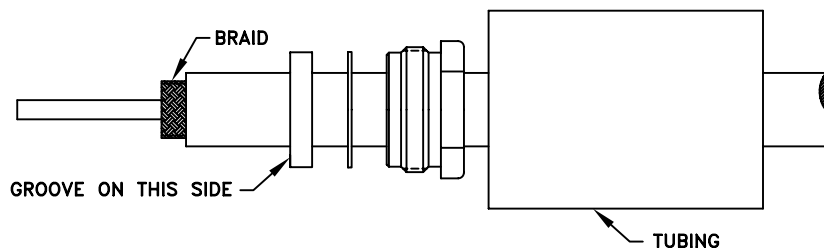


CABLE ASSEMBLY INSTRUCTIONS

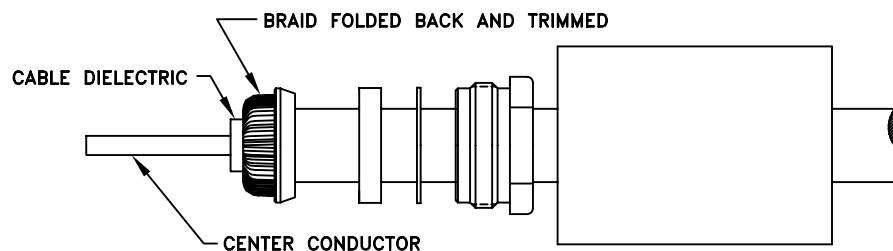
RFU-503



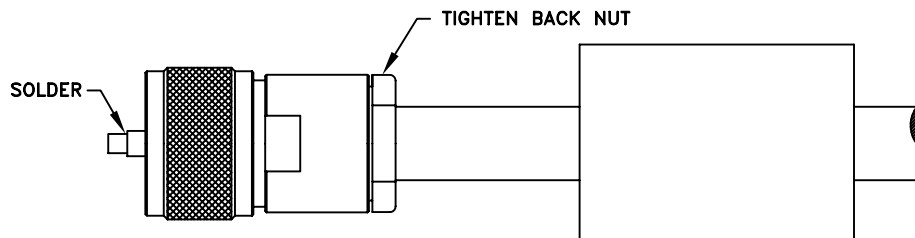
STEP 1



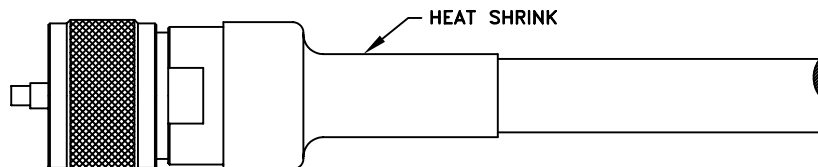
STEP 2



STEP 3



STEP 4



- Step 1: Cut end of cable evenly. Strip cable to dimensions shown on outline drawing. All cuts are to be clean and square. Do not nick braid, dielectric or center conductor. Slide tubing, back nut, washer and gasket onto cable. Braid must be combed for assembly of clamp.
- Step 2: Place the clamp over braid and push clamp back against cable jacket. Fold back braid wire and form over the clamp evenly. Trim extra braid if needed.
- Step 3: Properly seat groove of gasket onto clamp. Insert cable and hardware into the body. Solder or crimp contact in place if using solid center conductor. If using stranded conductor pre tin it and solder only. Tighten back nut while holding body stationary.
- Step 4: Position shrink tubing and apply heat.

RFU-503.DWG

RF CONNECTORS

05/22/06

7610 Miramar Road, San Diego, CA 92126-4202 - (858) 549-6340
(800) 233-1728 - Fax (858) 549-6345 E-mail: rfi@rfindustries.com - www.rfindustries.com

CZ