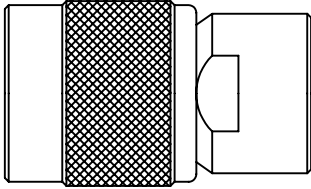


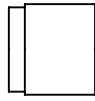
# CABLE ASSEMBLY INSTRUCTIONS

RFT-1801

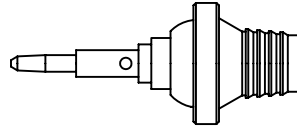
MAIN BODY



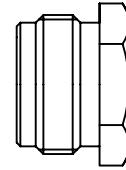
INSULATOR



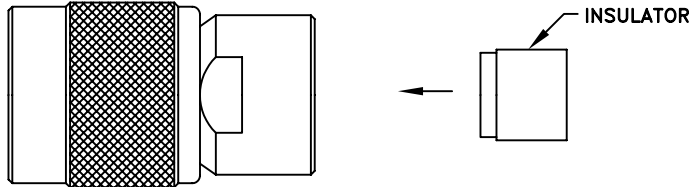
PIN ASSEMBLY



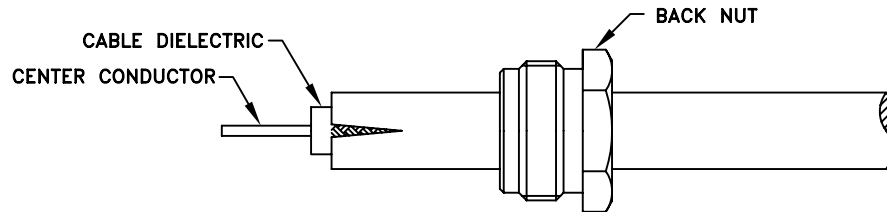
BACK NUT



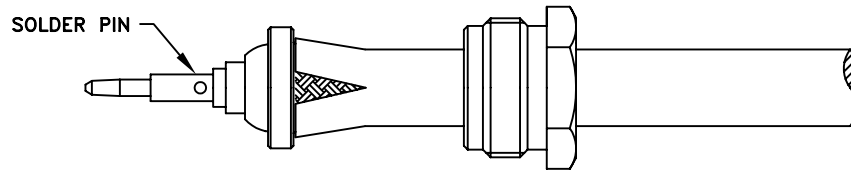
STEP 1



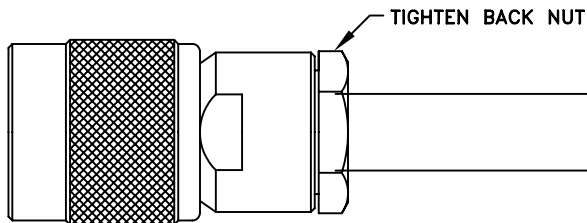
STEP 2



STEP 3



STEP 4



Step 1: Insert insulator into main body.

Step 2: Cut end of cable evenly. Strip cable to dimensions shown on outline drawing. All cuts are to be clean and square. Do not nick braid, dielectric or center conductor. Slide back nut onto cable.

Step 3: Insert cable into pin assembly. Pre tin cable conductor if using stranded cable (if needed). Solder pin in place.

Step 4: Insert pin assembly into the body. Tighten back nut while holding body stationary.

RFT-1801 AP.DWG

*RF CONNECTORS*

05/10/06

7610 Miramar Road, San Diego, CA 92126-4202 - (858) 549-6340  
(800) 233-1728 - Fax (858) 549-6345 E-mail: rfi@rfindustries.com - www.rfindustries.com

CZ