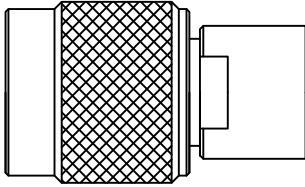


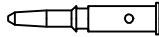
CABLE ASSEMBLY INSTRUCTIONS

RFT-1200

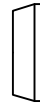
BODY



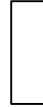
PIN



CLAMP



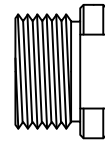
GASKET



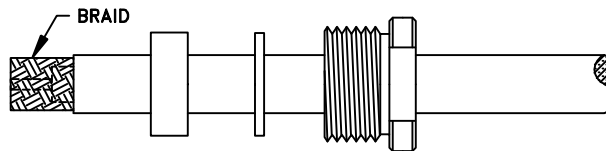
WASHER



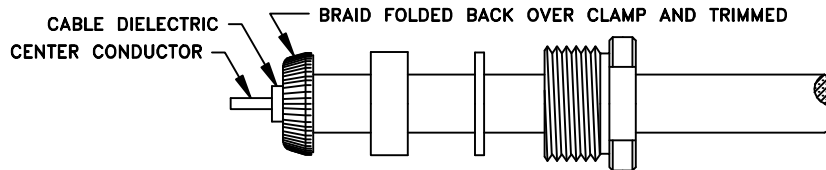
BACK NUT



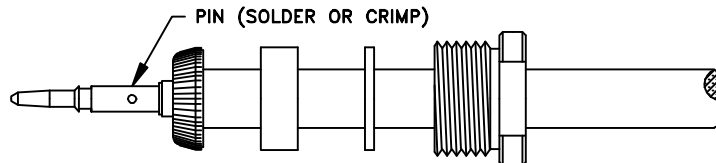
STEP 1



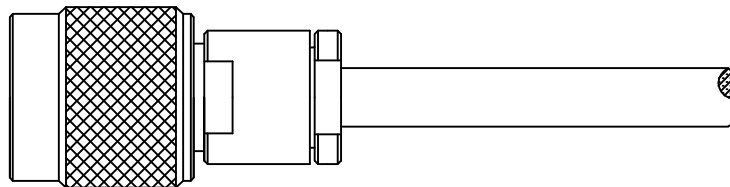
STEP 2



STEP 3



STEP 4



- Step 1: Cut end of cable evenly. Strip cable to dimensions shown on outline drawing. All cuts are to be clean and square. Do not nick braid, dielectric or center conductor. Slide back nut, washer and gasket onto cable. Braid must be combed for assembly of clamp.
- Step 2: Place the clamp over braid and push clamp back against cable jacket. Fold back braid wire and form over the clamp evenly. Trim extra braid if needed.
- Step 3: Slide pin onto center conductor until it yields against the cable dielectric. Pre tin cable conductor if using stranded cable (if needed). Solder or crimp pin in place. If soldering use minimum amount of heat.
- Step 4: Snug gasket against the clamp. Insert pin, cable and hardware into the body. Tighten back nut while holding body stationary.

RFT-1200 AP.DWG

RF CONNECTORS

05/06/06

7610 Miramar Road, San Diego, CA 92126-4202 - (858) 549-6340
(800) 233-1728 - Fax (858) 549-6345 E-mail: rfi@rfindustries.com - www.rfindustries.com

CZ